



# Fairfield County Government

---

COMMON DRIVEWAYS – PUBLIC WORKS DEPARTMENT

AUGUST 14, 2023

# What is a “Common Driveway?”

---

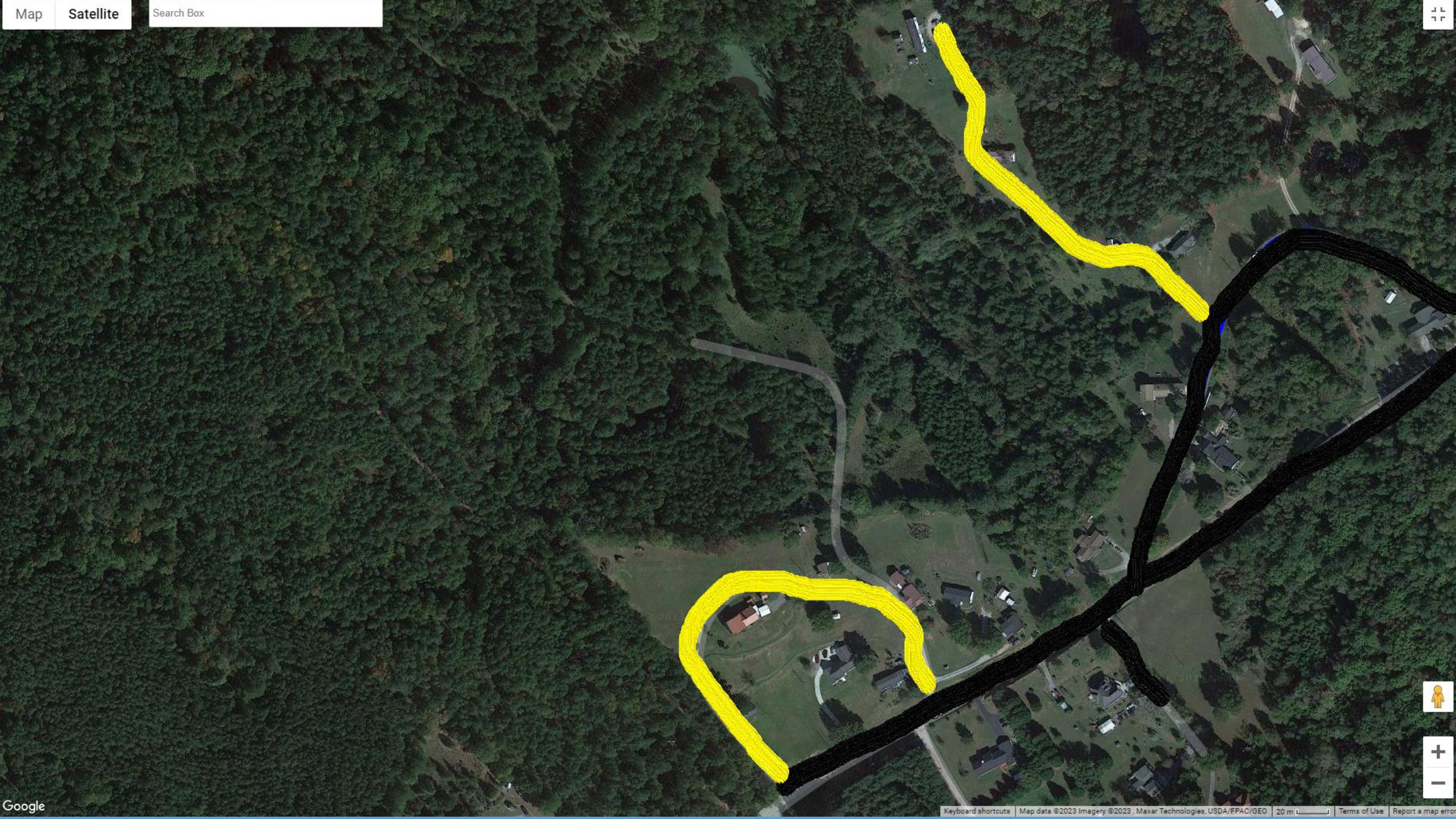
A common driveway is defined as:

“A section of roadway utilized by two or more occupied residences for providing access to a county road, highway or street. Maintenance of a common drive includes the section of roadway that the two or more occupied residences actually utilize from the county road, highway or street. Any roadway past this area is not the responsibility of the County.

## Common Drives:

- Are private property, not a county dirt/gravel road
- Some common drives have gates restricting access
- The County spends \$6,000 - \$8,000 a month maintaining common drives





Map

Satellite

Search Box



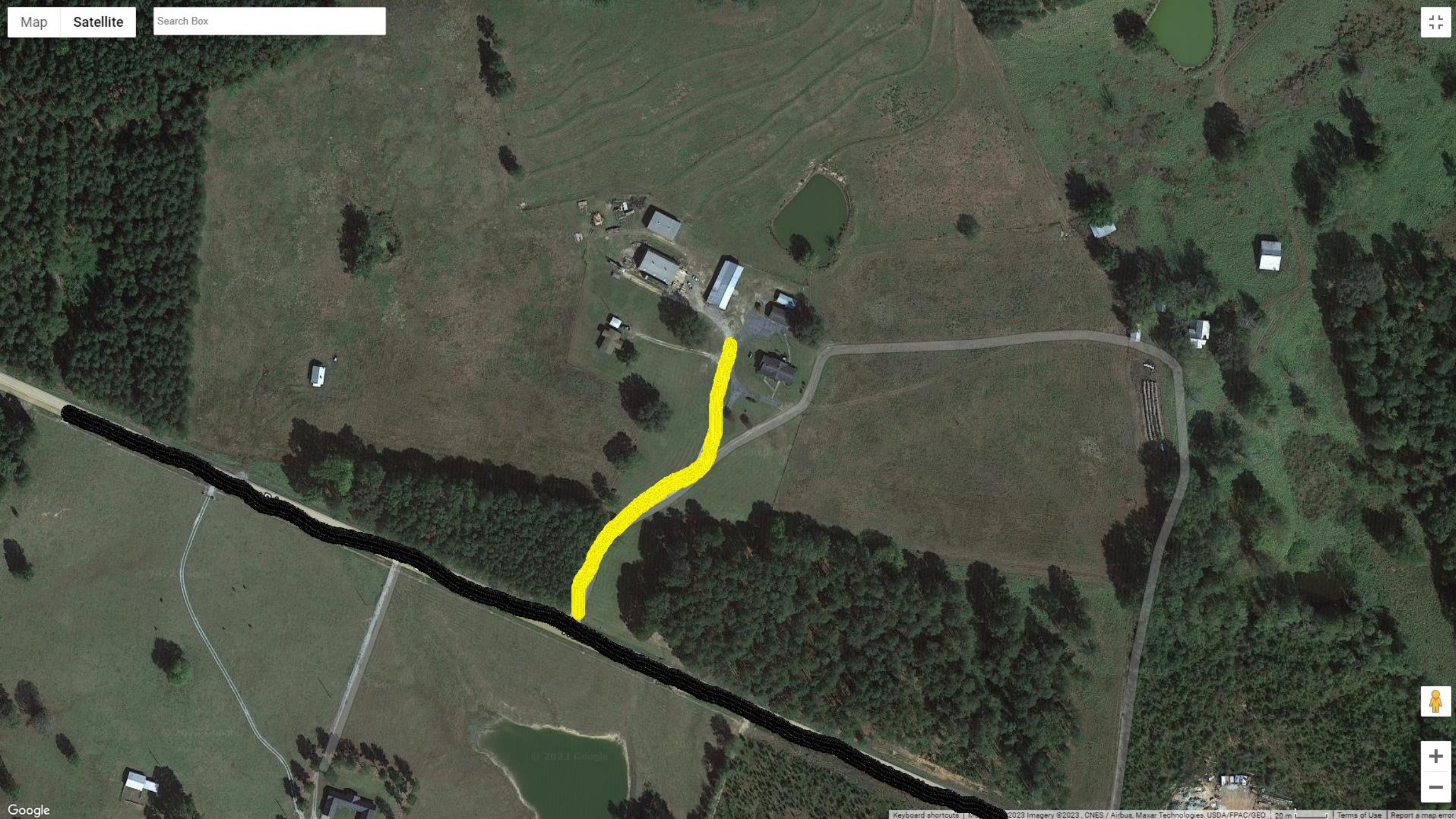
Google



Map

Satellite

Search Box

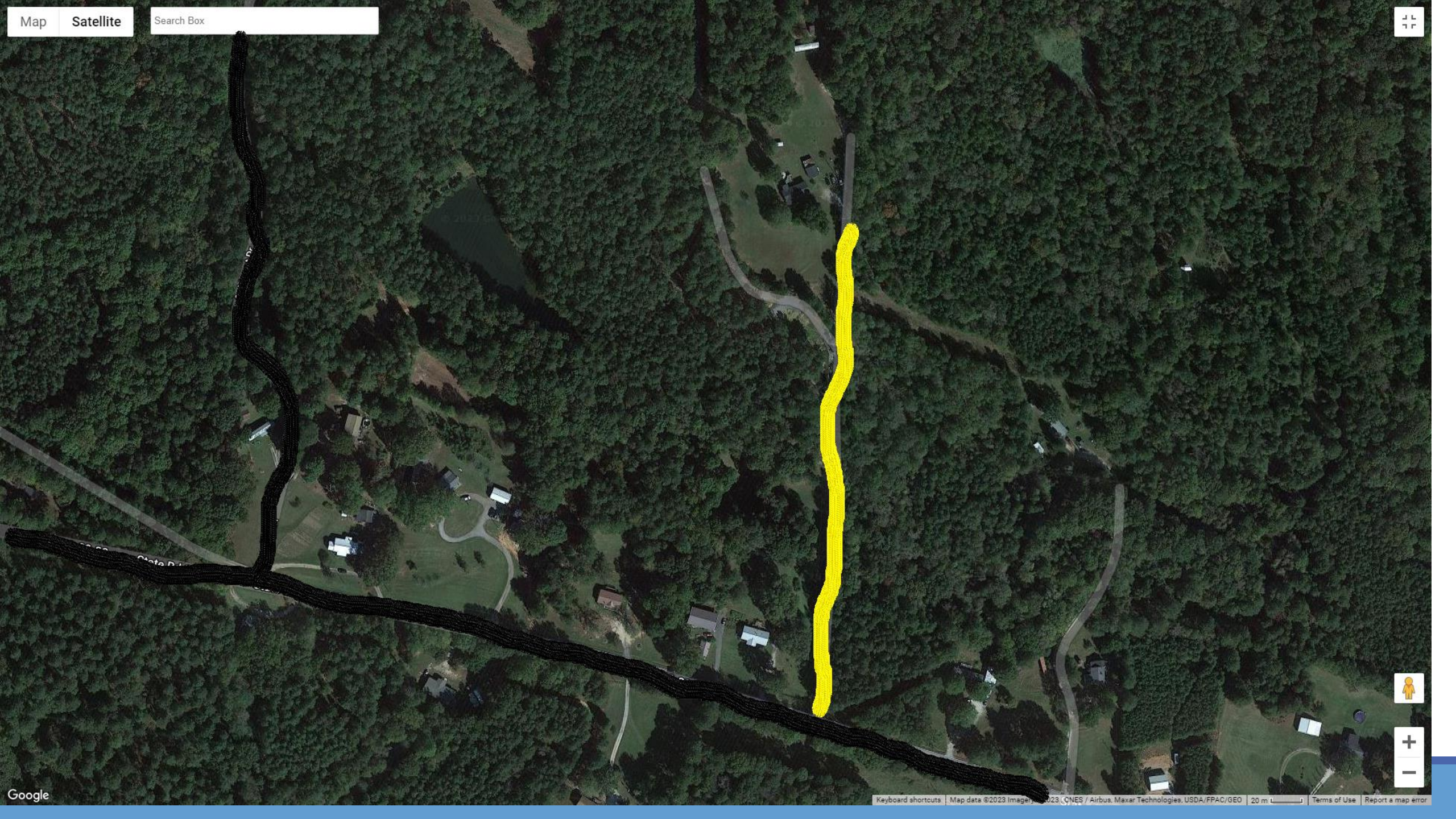




Map

Satellite

Search Box







Map

Satellite

Search Box



Google



Map

Satellite

Search Box



Google



Map

Satellite

Search

Press Esc to exit full screen





Map

Satellite

Search Box



Press Esc to exit full screen





---

Fairfield County Public Works department maintains approximately 90+ common driveways throughout Fairfield County.

Some of the common driveways have a road sign and some do not.