

## YOUR INPUT IS NEEDED

*YOU are the experts on your community. YOUR wellbeing, and your neighbors' wellbeing, are the ultimate goal of this project.*

*Your input will inform our analysis of housing needs and to suggest goals for the County to work towards.*

*What you share will be incorporated into the objectives and strategies that the County and its partners carry forward to encourage the right housing growth.*

### TAKE THE SURVEY!

The QR Code below will take you to a brief survey about housing goals for Fairfield County. It should only take about 5-10 minutes, so **please respond and share it with friends and neighbors!**



Fairfield County  
250 N. Walnut St  
Winnsboro, SC 29180  
Phone: 803-635-1415  
E-mail: [synithia.williams@fairfield.sc.gov](mailto:synithia.williams@fairfield.sc.gov)

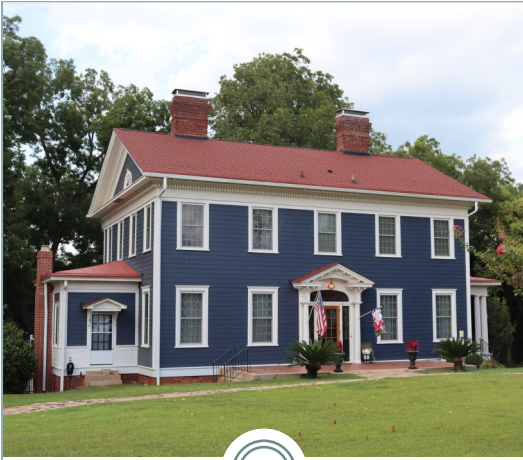


**MRB** | *group*

## HOUSING STUDY AND ANALYSIS



Fairfield County  
*Getting better every day*



## PURPOSE

Fairfield County wants to be well-prepared to respond to development opportunities in ways that meet community priorities and improve housing options.

This study will help Fairfield County develop a better understanding of the existing housing market and the needs of County residents. It will recommend strategies and initiatives to help meet those needs.

Ultimately, this study will help Fairfield County and its partners to shape the changing housing market in ways that optimize community wellbeing.

## IMPORTANCE OF HOUSING

Safe and affordable housing is essential for good health. People who live in poor housing conditions are more likely to experience a variety of health problems, including respiratory infections, asthma, lead poisoning, and mental health issues.

Stable housing also provides a safe and supportive environment for children to learn and grow. Children who move frequently are more likely to fall behind in school and drop out.

Housing affordability is essential for economic opportunity. When people spend more than 30% of their income on housing, they have less money to spend on other necessities, such as food, healthcare, transportation, education, and saving for retirement.

Housing plays an important role in building strong and cohesive communities. When people have access to affordable housing, they are more likely to participate in community activities and feel connected to their neighbors. Stable housing also helps to reduce crime and create safer neighborhoods.

## SCOPE

The goals and purpose of the study will be accomplished by evaluating the following characteristics.

- ◆ Population demographics and projections like:
  - Population
  - Income
  - Job Growth
- ◆ Housing data such as:
  - Quality
  - Location
  - Affordability
- ◆ Real estate market analysis
- ◆ Alignment of development with current and future infrastructure
- ◆ Implementation strategies



*Vacant lots and housing dot Winnsboro*