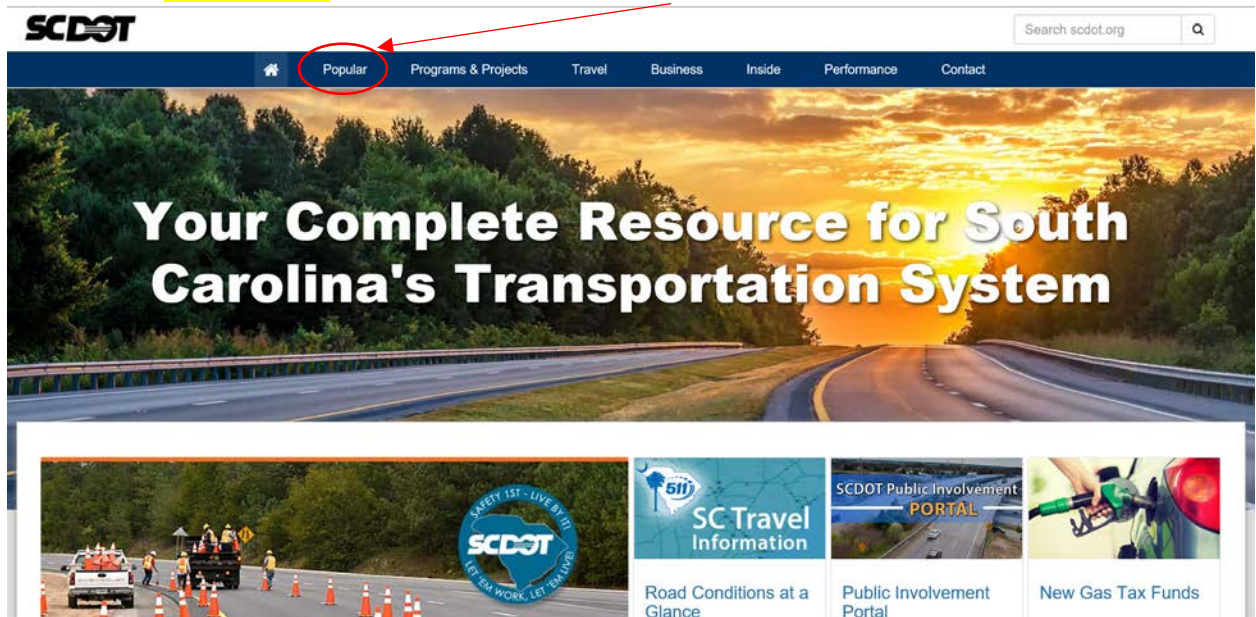
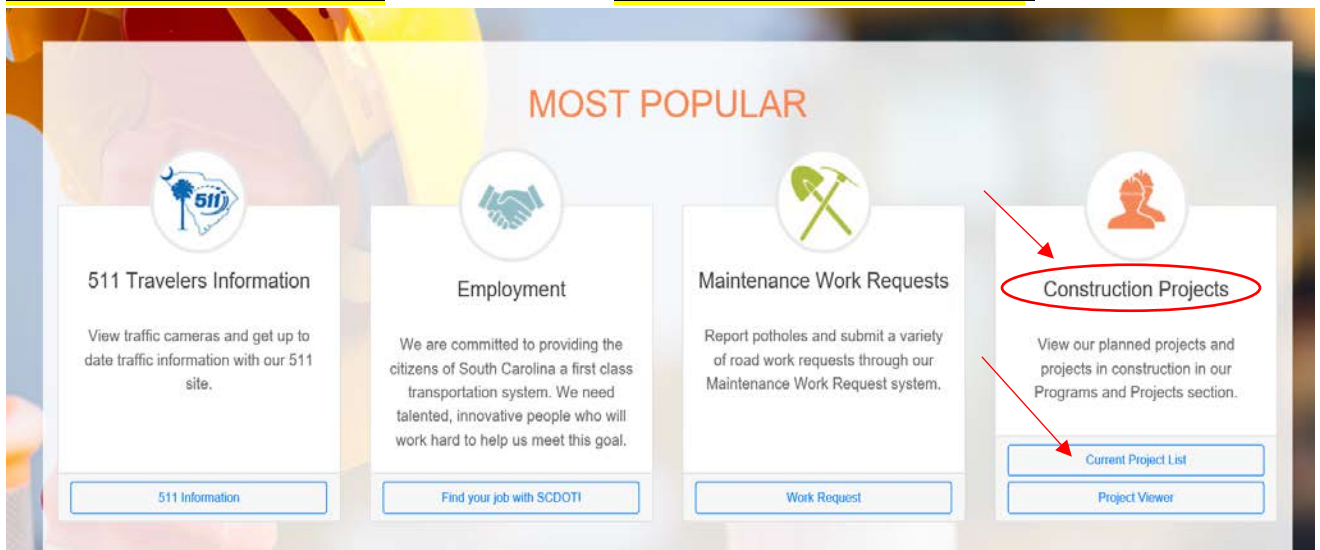


CHECKING THE CURRENT PROJECT LIST/PROJECT VIEWER FOR SCDOT:

- 1) Search for <https://www.scdot.org> in your internet browser or click on the hyperlink.
- 2) Click on the **“POPULAR”** tab.



- 3) To check the status of current projects of SCDOT, click on **CURRENT PROJECT LIST or PROJECT VIEWER** tab under the **CONSTRUCTION PROJECTS**.



4) If you select the **CURRENT PROJECTS** tab, click on the **MIDLANDS** section of the map.



CURRENT PROJECTS

Regional Projects in Your Area

In an effort to promote and improve public outreach for upcoming projects, SCDOT has developed a list of active projects in four primary regions of the state. Click on a region to view information about upcoming meetings, project schedules, opportunities for public comment, and much more.

Click on a region to view projects in your area.



Educational Tools

Public involvement is an integral part of the transportation development process. Input received from the public during the preliminary engineering phase of project development influences the ultimate outcome of any project. SCDOT's mission is to find solutions that provide adequate, safe, and efficient transportation services for the public that minimize impacts to the human and natural environment. To learn more about the transportation decision making process and other considerations that are made during project development, please take an opportunity to watch the

5) You can scroll through the **PROJECT NAME/COUNTY** list to search for "Fairfield County" or enter "Fairfield County" in the **Search** block.

Midlands Projects

[Back to Map](#)

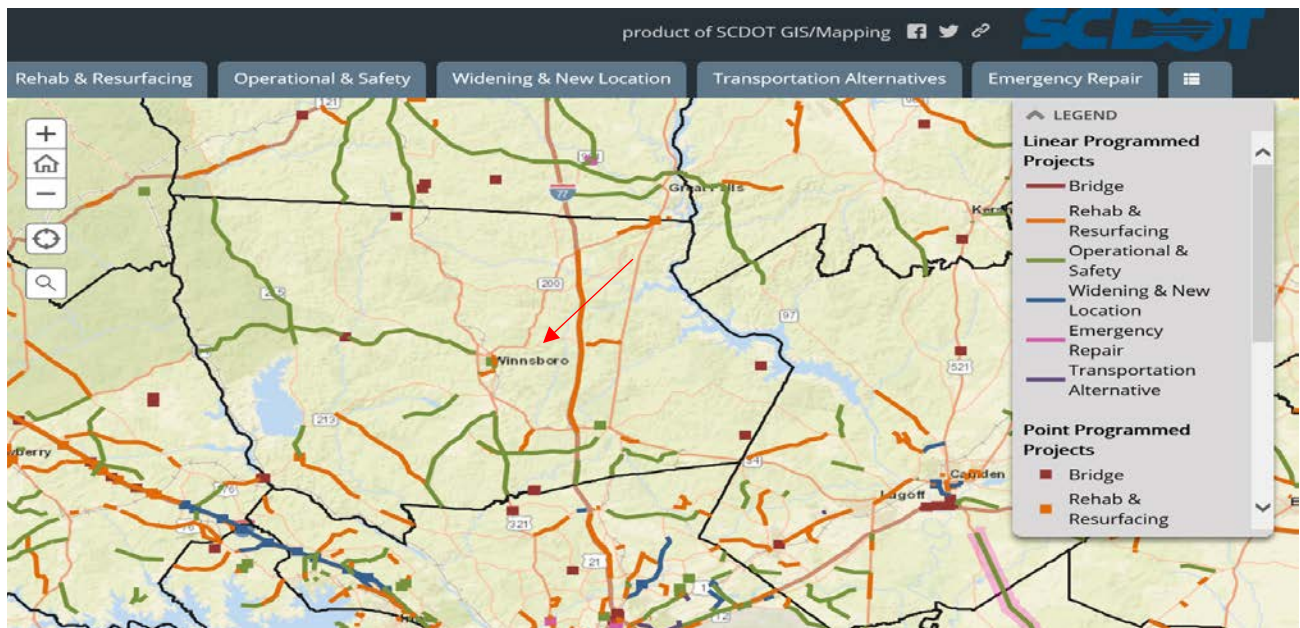
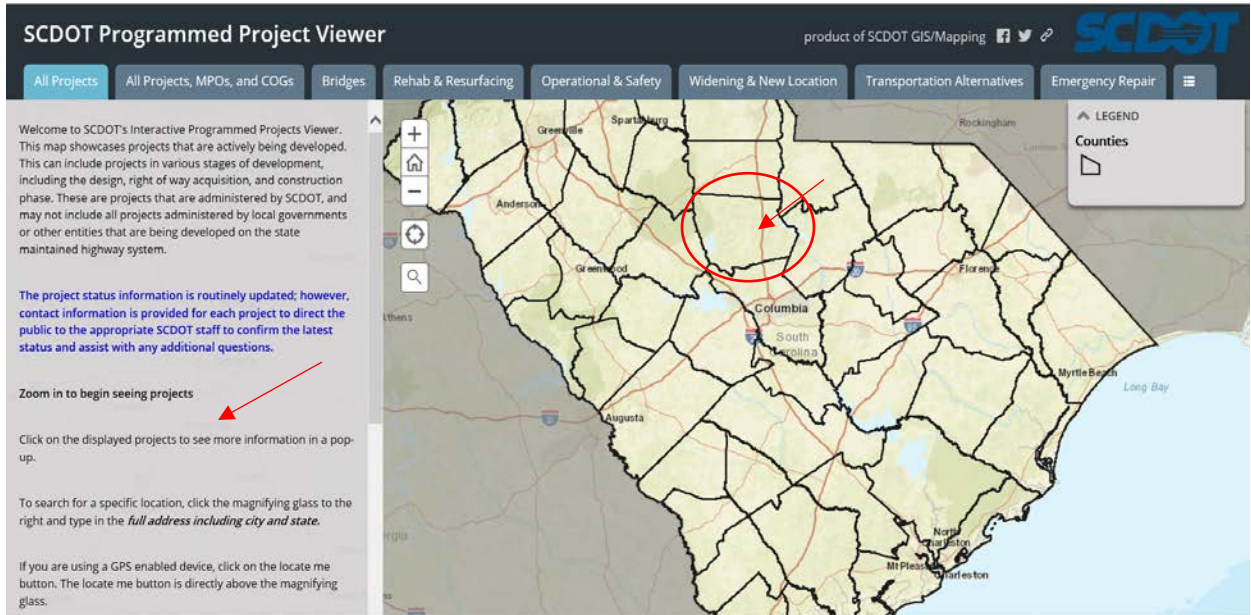
Search:

Showing 1 to 28 of 28 entries (filtered from 131 total entries)

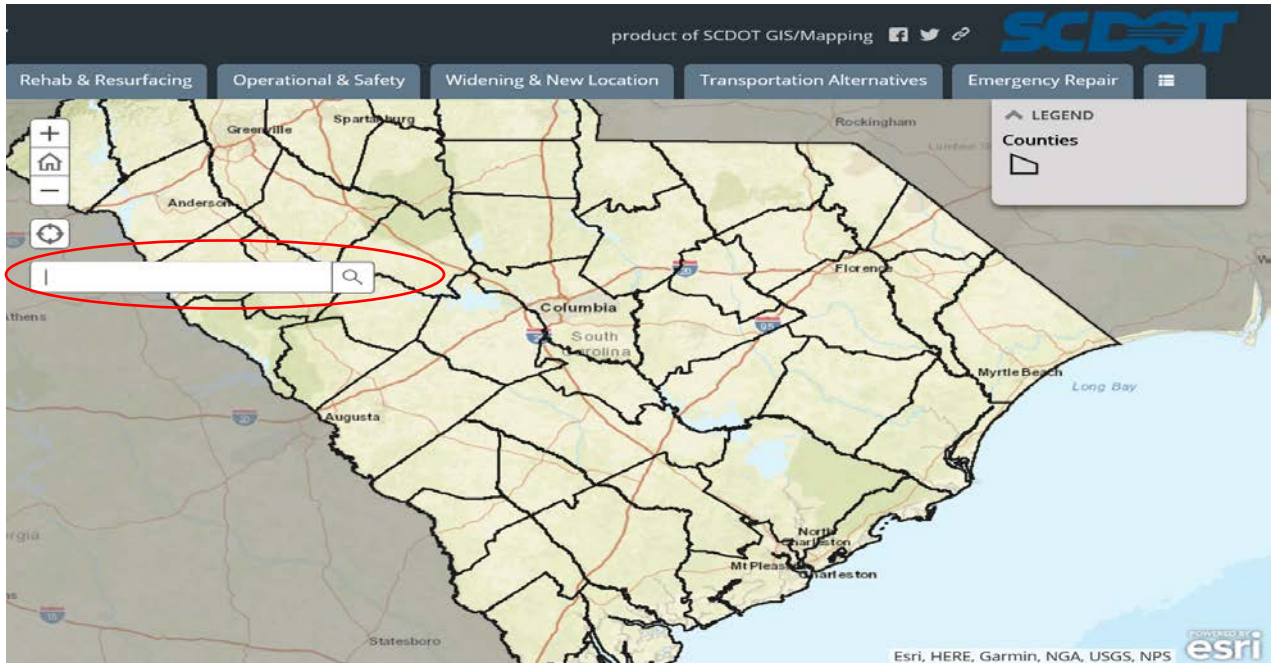
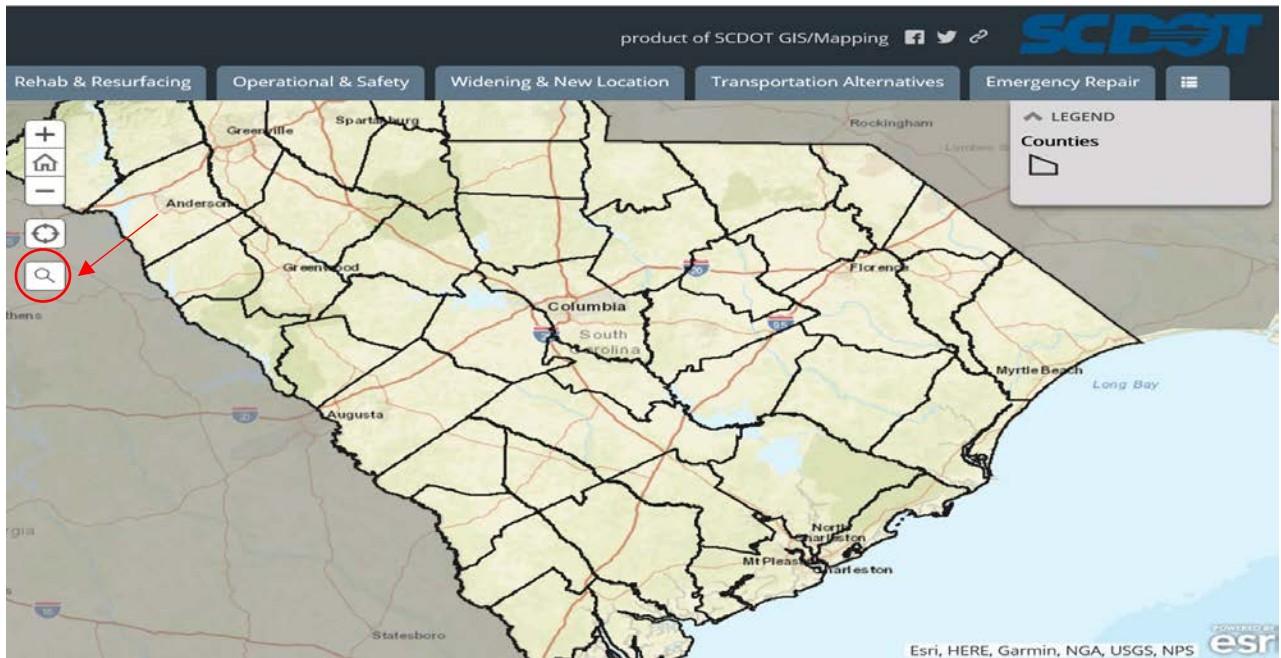
Project Name	County
Hitchcock Parkway Improvements in Aiken County The South Carolina Department of Transportation (SCDOT), in cooperation with the Federal Highway Administration (FHWA), proposes to improve SC 118 (Hitchcock Parkway) from US 1 (Jefferson Davis Highway) to SC 302 (Silver Bluff Road) in the City of Aiken.	Aiken
4 Proposed Bridge Replacements on I-20 in Aiken County	Aiken
Improvements SC 19 (Whiskey Rd) at L2492 (Eagle Rd) and S-447 (Old Whiskey Rd.)	Aiken
Intersection improvements at SC 125 (Atomic Road) and S-62 (N. Silverton Street) in Aiken County	Aiken
US 278 at SC 300 and SC 3 Intersection Improvements in Barnwell County	Barnwell
US 1 Bridge Replacement over the CSX Transportation Railroad in Kershaw	Kershaw
US 521 Bridge Replacement over Big Pine Tree Creek in Kershaw County	Kershaw
US 521 Bridge Replacements over the Old Railroad Bed in Kershaw County	Kershaw
US Route 1 Bridge Replacement over CSX Railroad Number 3 in Kershaw County	Kershaw
S-51 (Camp Creek Road) Bridge Replacement over Gills Creek in Lancaster County	Lancaster
US 521 @ S-755 Safety Improvements Project in Lancaster County The South Carolina Department of Transportation proposes safety improvements to the US 521 (Charlotte Highway) and S-755 (North	Lancaster

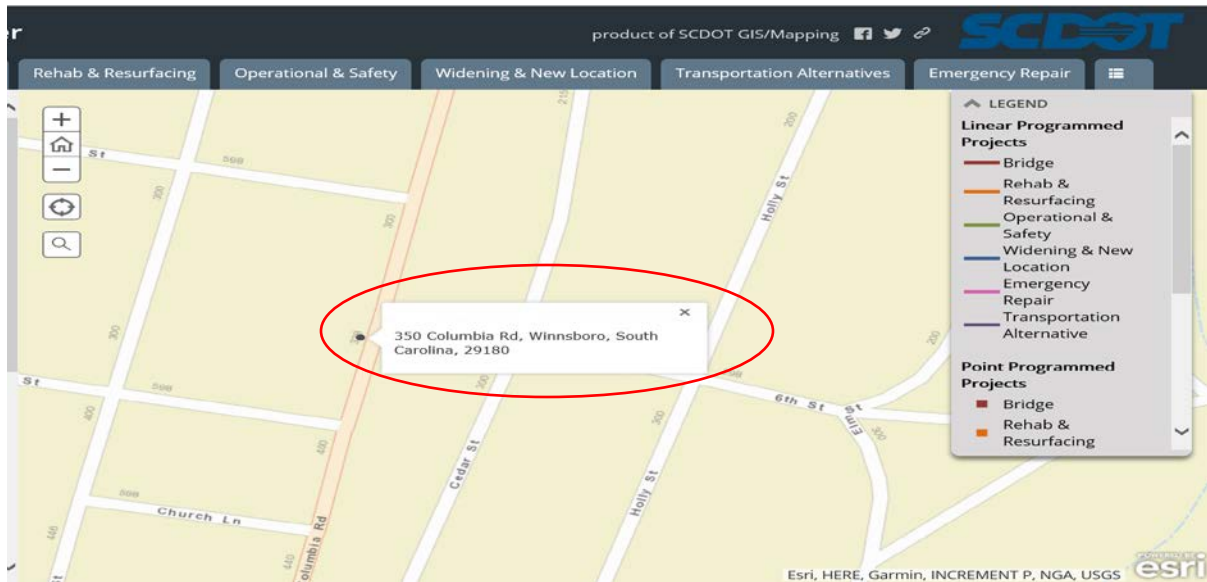
6) If you select the **PROJECT VIEWER** tab, you can search for current projects by following the directions on the left of the screen.

To search for Fairfield County, place the cursor on the map for Fairfield County and roll the mouse out to expand the map size. This will allow towns, roads or landmarks.

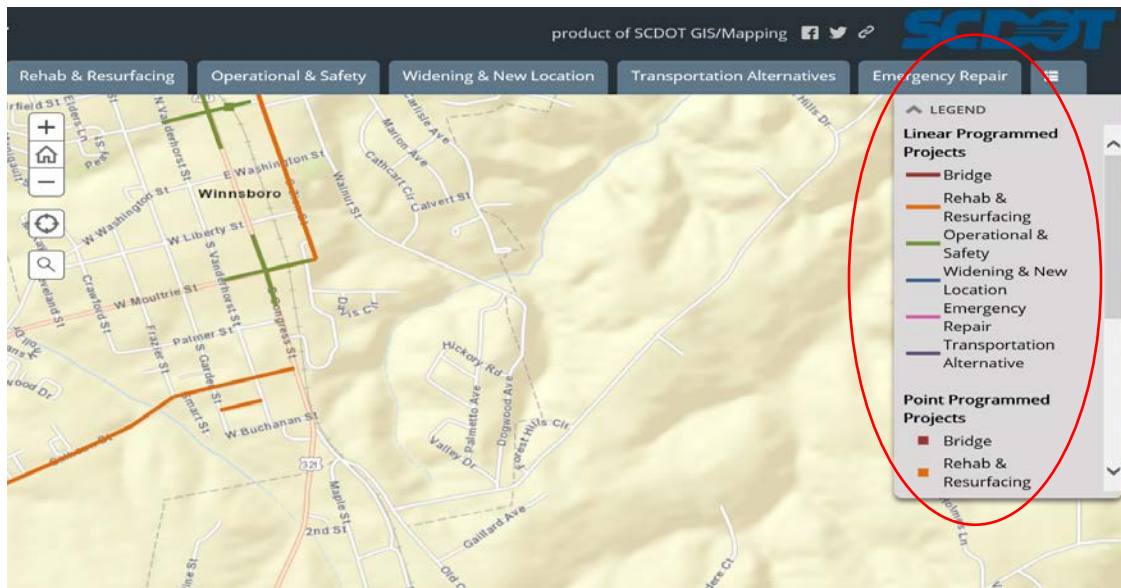


7) By using the magnifying tool, you can also search for the road or city. Click on the magnifying tool and enter an address, street name, or road name.





8) In the legend is a color coded explanation of projects being completed for the roads.



9) If you click on the color coded line, there is information about that project and who to contact for additional information or questions.

