

STAKEHOLDER KICK-OFF MEETING

LAKE WATEREE FLOOD STUDY – PHASE 1

Kershaw County Government Center
515 Walnut Street
Camden, SC 29020

September 3, 2014
10:00am



Outline

- Introductions
- Purpose and Objectives of this Meeting
- Project Background
- Lake Wateree Overview
- Phase I Study Overview
- Potential Next Steps
- Open Discussion and Information Sharing

Introductions

List of Invitees/Participants

- Kershaw County
- Fairfield County
- ESP Associates, PA
- Lancaster County
- City of Camden
- SC DNR – Flood Mitigation
- Duke Energy
- Lake Wateree Association
- Lake Wateree Home Owners Association
- Carolina Flood Solutions

Meeting Purpose and Objectives

- Identify stakeholders that are interested in and/or potentially impacted by project
- Provide overview of project scope, schedule, deliverables, and planned logistics
- Identify and request data/information that will aide in the project

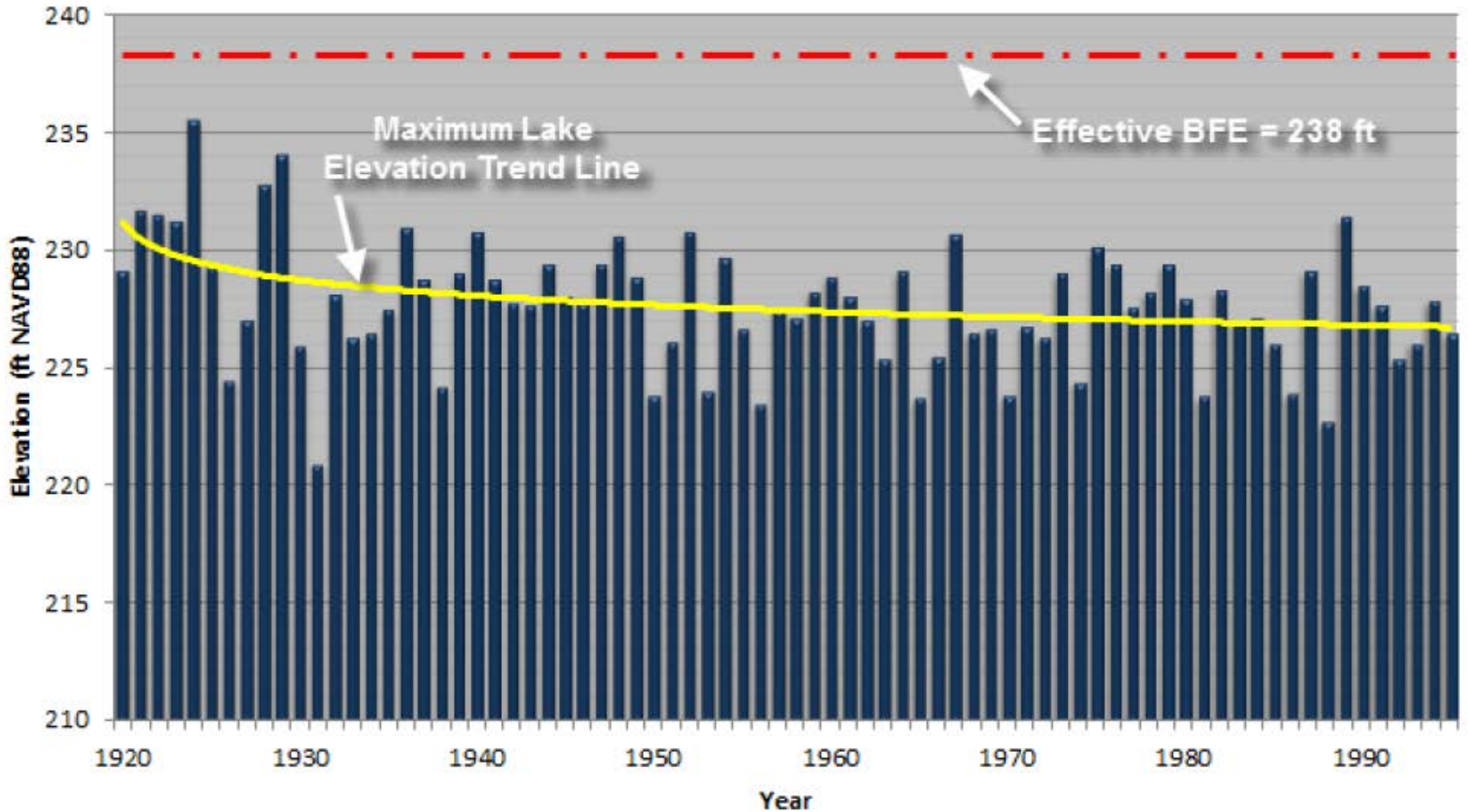
Meeting Purpose and Objectives

- Collectively discuss questions, concerns, and other considerations relevant to project
 - Maintain transparency through project
 - Minimize “surprises”

Project Background

- “Litmus Test” Study to assess the reasonableness of the regulated flood elevations and floodplain mapping along Lake Wateree
- Study in response to questions/comments that Kershaw and Fairfield counties have received
- Results of study will determine next steps
- FEMA/SCDNR will be reissuing new flood maps (i.e. FIRMs) in late 2014, but will be based on same analysis

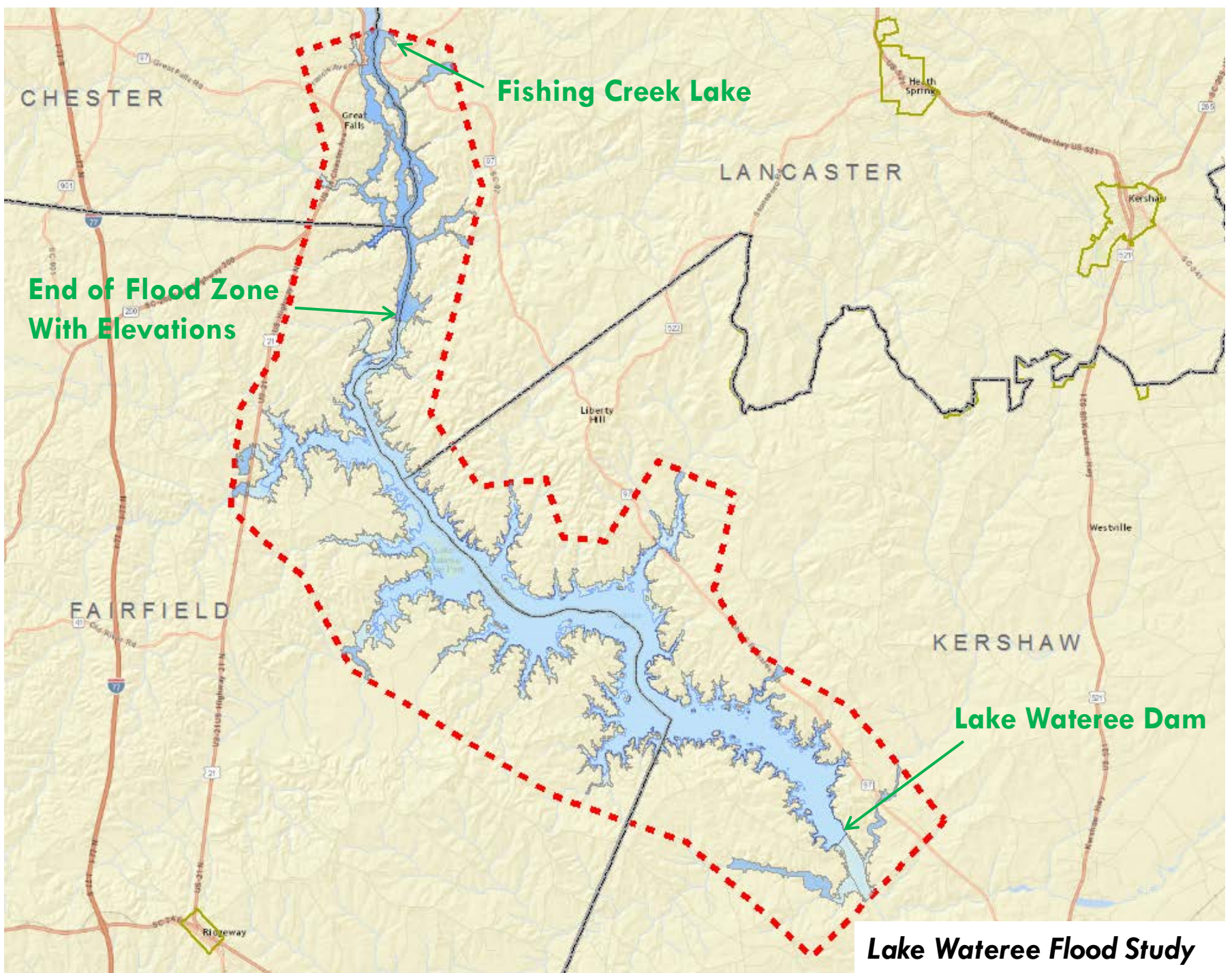
Annual Maximum Lake Elevation



Lake Wateree Overview



- 20 sq mi lake area
- 240 mi of shoreline
- 15 mi from dam upstream to end of Lake
- 1 of 11 reservoirs along Catawba-Wateree River System
- 4,800 sq mi drainage area
- Operated by Duke Energy for hydroelectric power generation
- Lake serves recreational and other public uses
- Key Elevations:
 - Normal Pool = 222.5'
 - Full Pond = 224.5'
 - FEMA Elevation = 238 – 240'



Lake Wateree Flood Study

Phase 1 Study Overview

Phase 1 Project Tasks

- Stakeholder Coordination
- Data/Information Compilation
 - Identify, obtain, and compile data/information relevant to performing independent analysis
 - Historic lake elevations and flooding, survey, previous engineering studies, etc.
 - Have obtain latest SCDNR LiDAR and several other data sets available on internet

Phase 1 Study Overview

Phase 1 Project Tasks

- Engineering Analysis
 - Hydrologic and Hydraulic analysis – independent assessments peak flows and lake elevations
 - Potential Impact analysis – identify mapping changes that would result from independent flows/elevations
- Preliminary Engineering Study Report
 - Document approaches, findings, and recommendations
 - Comparison maps and potential impact metrics
 - Serve as basis on whether to proceed to Phase II or not

Phase 1 Study Overview

- Report will be made available to stakeholders
- Schedule
 - This meeting is first step
 - Anticipate to have report complete by end of October 2014

Potential Next Steps

- If study indicates significant differences in flood elevations and mapping, Counties will determine if a second phase of project to revise regulated flood information to FEMA/SCDNR will be initiated
- Phase II would entail refined engineering analysis, coordination with FEMA/SCDNR and formal application process to revise maps.
- Phase II schedule TBD, but likely will be fall/winter 2015 or later before maps officially revised

Questions & Open Discussions

- Answer your questions
- Discuss concerns or items of considerations that need to be accounted for in study
- Discuss what data/information you may have to support project

Questions & Open Discussions

Types of Data/Information We are Looking For

- Lake Operation Plans, Previous Studies, and other Engineering/Survey Data
- Flood History:
 - ▣ Logs of historic flooding
 - ▣ High Water Marks
 - ▣ Photo accounts, flood insurance claims
- Property/Survey information
 - ▣ Elevation certificates
 - ▣ Building footprints
 - ▣ Parcels
 - ▣ Easements
- General base data
 - ▣ Aerials
 - ▣ Topographic information
 - ▣ Planimetrics

Contacts

Kershaw County

Carolyn B. Hammond, Director
Kershaw County Planning and Zoning
803-425-7233, Extension 5341
carolyn.hammond@kershaw.sc.gov

Fairfield County

Tim Roseborough, Director
Planning, Building, and Zoning
803-712-6596
troseborough@fairfieldsc.com

Engineering Consultant (ESP Associates, PA)

Neal Banerjee, PE, CFM
Assistant Project Manager
803-835-0890
nbanerjee@essassociates.com