

ANNEX I TO FAIRFIELD COUNTY EMERGENCY OPERATIONS PLAN

EMERGENCY MEDICAL SERVICE (AMBULANCE)

I. AUTHORITIES AND REFERENCES

A. Purpose

To provide for the coordination and use of all ambulance stations, personnel and equipment in the county during a disaster situation, and employ ambulance assets of mutual aid, State and Federal resources, as requested.

B. Authority

1. Fairfield County Ordinance No. 487, signed May 9, 2005.
2. South Carolina Legislative Act Number 199, July 30, 1979.
3. Fairfield County Mitigation Plan

C. Definitions

AMBULANCE SERVICE--Composed of all ambulance stations, their personnel, facilities and equipment at county level; and upon request, local fire departments, rescue squads, neighboring county ambulance services and appropriate State agencies.

II. SITUATION AND ASSUMPTIONS

A. Situation

Fairfield County is subject to disasters (natural, technological or terrorist act) that could result in the need for increased ambulance service, and could greatly affect the public health and result in a large number of deaths and/or injuries. While Fairfield County has the capability and adequate resources to meet routine ambulance needs during a disaster, problems are multiplied and more complex. Additionally, the responsibility of evaluating and reporting the casualty situation to hospital authorities is within the functional area of the Ambulance Service. A disaster such as this could tax the capability and resources of the Ambulance Service.

B. Assumptions

Existing EMS personnel and equipment will be able to handle most emergency situations. When additional support is required, assistance will be obtained through existing mutual aid agreements and, if necessary, various State or Federal agencies.

III. MISSION

To provide a trained and well-equipped organization whose duties are to locate, provide basic and advanced life support, and transport non-ambulatory patients to hospitals or other designated health care facilities.

IV. CONCEPT OF OPERATIONS

A. General

1. Activities will be directed and coordinated from the Fairfield County Emergency Operations (*EOC*).
2. The Director, Fairfield County EMS (*Ambulance*), has overall responsibility for mission assignments and coordination of ambulance resources during disasters.
3. EMS personnel will be trained on the principles of the National Incident Management System (NIMS) and integrate those principles in all EMS planning and response operations.

B. Implementation of Incident Command System (ICS)

1. Fairfield County EMS (FCEMS) recognizes the general principles of Incident Command System as developed by the Fire Service.
2. The function of incident command is the overall management and coordination of all responding personnel and resources. Primarily, the type of incident will identify the person assuming this command: fire, medical, traffic, etc.

C. Transportation

Transporting of patients will be in compliance with FC EMS Standard Operating Procedures (SOP).

D. Hazard Procedures

Employees are to remain off scene until directed by the appropriate Command Authority to remove patients and to only do so after the Command Authority or his designee has decontaminated the patients. Employees are not permitted into “hot” or “warm” zones and are not permitted to participate in rescue treatment (including CPR) and/or decontamination procedures of patients exposed to a hazardous substance as identified by the appropriate Command Authority. Employees exposed to hazardous materials will be decontaminated by the Command Authority or his designee and will be medically treated and monitored by the Service or its assignee at no charge to the employee.

When responding to VC Summer Nuclear Station, or other Radiological incident, refer to FCEMS Standard Operating Procedures Manual, section 5.19, Radiological Hazards. Always follow any requests from VC Summer Security personnel.

E. Hospitals

As a general rule, patients can be transported to the facilities listed below:

<u>Hospitals</u>	<u>Criteria</u>
RICHLAND MEMORIAL HOSPITAL	Multi-trauma, head injuries, cardiac, and burns.
BAPTIST MEDICAL CENTER	Cardiac, trauma (no head trauma)
PROVIDENCE HOSPITAL	Cardiac, trauma (no head trauma)
LEXINGTON MEDICAL CENTER	Cardiac, trauma (no head trauma)
CHESTER HOSPITAL	Minor trauma
FAIRFIELD MEMORIAL HOSPITAL	Minor trauma
KERSHAW MEMERIAL HOSPITAL	Minor trauma
NEWBERRY HOSPITAL	Minor trauma

E. Actions by Phases of Emergency Management

1. Preparedness

- a. Develop procedures to implement this plan and alert all personnel.
- b. Identify, train, and assign personnel to triage teams.
- c. Train personnel in mass casualty and disaster situations.
- d. Identify potential hazardous areas.
- e. Maintain agreements and working relationships with supporting agencies/departments.
- f. Determine additional or alternate medical facilities.
- g. Ensure EMS integrates NIMS principles in all planning. As a minimum, primary action officers for EMS will complete FEMA's NIMS Awareness Course, or an equivalent course.

2. Response

- a. Maintain liaison with the Emergency Operations Center (*EOC*).
- b. Perform ambulance, basic and advanced life support duties as needed.
- c. Perform triage and direct assignments in priority.
- f. Evaluate and report all available information concerning the nature and extent of trauma in the affected area(s) of the appropriate agency.

3. **Recovery**

- a. Maintain liaison with the EOC.
- b. Be prepared to provide ambulance service, basic and advanced life support, within the affected area until conditions return to normal.
- c. Assist in other emergency functions when feasible.

4. **Mitigation**

- a. Specialized training, including disaster management.

V. ORGANIZATION AND ASSIGNMENT OF RESPONSIBILITIES

A. Organization

- 1. *See Organization Chart, Appendix 1.*
- 2. The Fairfield County Emergency Medical Service (*AMB*) Director is designated as Coordinator of Fairfield County EMS (*AMB*).
- 3. The Director is responsible for coordinating the ambulance service activities of the following organizations when they are requested to support the conduct of operations under this plan:

a. **Local Government**

Fairfield County Emergency Medical Service (*Ambulance*)

b. **State/Federal Government**

S.C. Department of Health and Environmental Control (*DHEC*) EMS Division.

B. Responsibilities

- 1. Develop procedures to implement this plan and alert all personnel.
- 2. Identify, train, and assign personnel to triage teams.
- 3. Train personnel in mass casualty and disaster situations.
- 4. Identify potential hazardous areas.
- 5. Maintain agreements and working relationships with supporting agencies/departments.
- 6. Determine additional or alternate medical facilities.

VI. ADMINISTRATION AND LOGISTICS

A. Reports

Initial situation reports will be submitted to the Director, Fairfield County EMS (*Ambulance*), as soon as practical. Reports will be consolidated and submitted to the Fairfield County Emergency Management Department for analysis and further distribution and will include, but not be limited to the following:

1. Type trauma situation
2. Damage
3. Action taken
4. Casualties incurred
5. Nature and extent of any assistance required.

B. Logistics

Ambulance Service will utilize supplies, operational aids and transportation organic to their organization. After internal available supplies, transportation and manpower are exhausted, additional aid will be requested through the EOC.

VII. DIRECTION AND CONTROL

A. Ambulance service activities will be coordinated from the Fairfield County Emergency Operations Center (EOC).

B. The Fairfield County EOC will be located at one of the following sites and will be announced by the Fairfield County Emergency Management Department at the time of activation:

1. **Primary---** is located at 100 Tidewater Dr, Winnsboro, SC.
2. **Alternate--**Fairfield County Governmental Complex is located at 350 Columbia Rd., Winnsboro, SC.

C. Ambulance service will be directed over the Ambulance Service Radio Communications Net and telephone.

D. Coordinating plans have been made between Fairfield County Rescue Squad, ambulance services in adjacent counties and fire departments, as needed.

E. Line of Succession

1. Director, Fairfield County EMS
2. Training Coordinator, Fairfield County EMS
3. Captain EMS
4. Lieutenant EMS

VIII. PLAN MAINTENANCE AND DEVELOPMENT

A. Development

1. The Director of Emergency Medical Services will be responsible for the development and maintenance of this annex.

B. Maintenance

1. This annex will be reviewed annually.
2. This annex will be updated as necessary, based upon deficiencies identified by drills and exercises, changes in local government structure, or technological changes, etc.

Director, Fairfield County EMS (Ambulance)

Date

Director, Fairfield County Emergency
Management Department

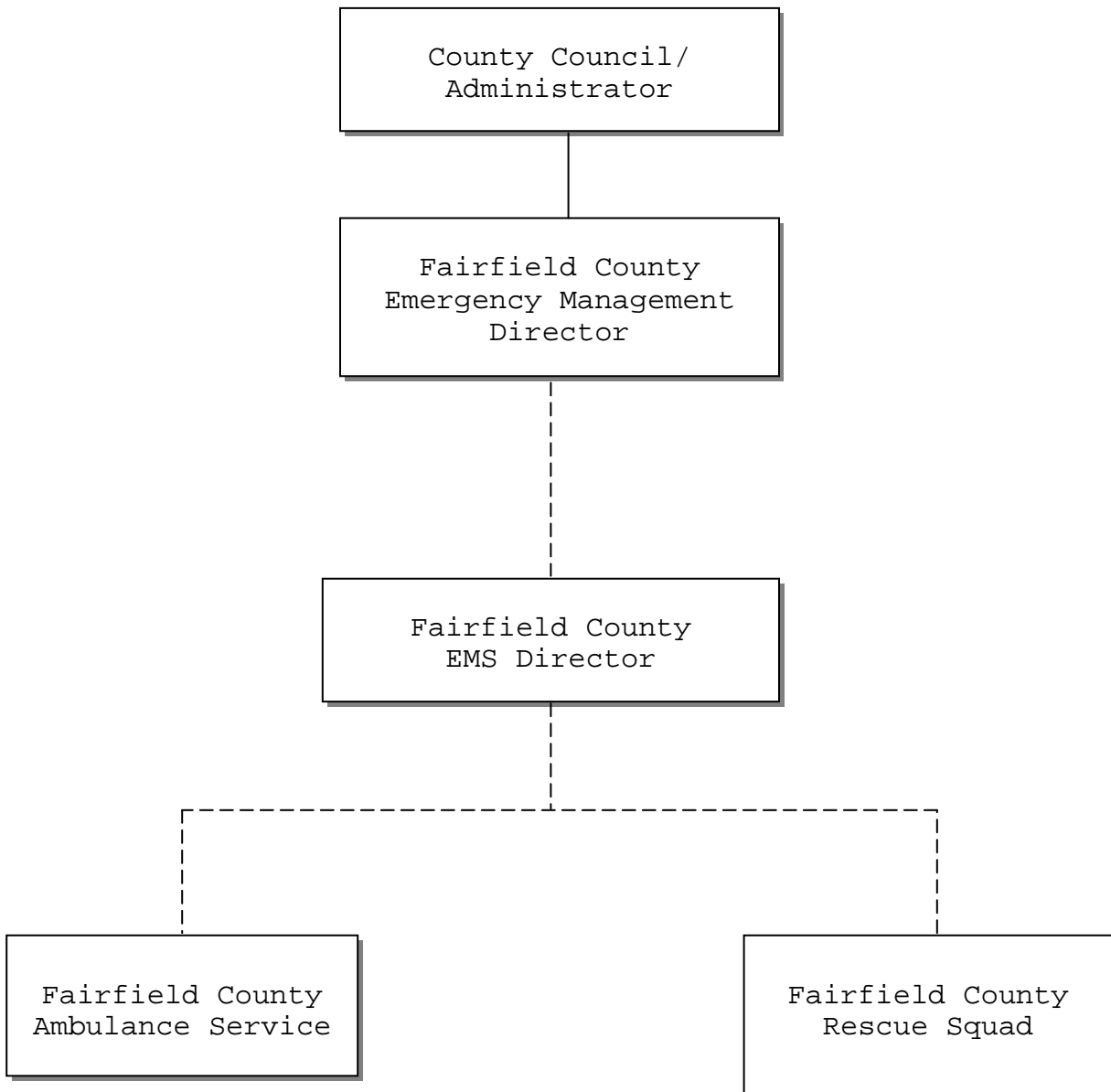
Date

APPENDICES:

1. **Organization Chart**
2. **Alert List**
3. **Resources List**
4. **Communications Net**
5. **Host Area Requirements Statement**

APPENDIX 1 TO ANNEX I, EMERGENCY MEDICAL SERVICE—ORGANIZATION CHART

FAIRFIELD COUNTY

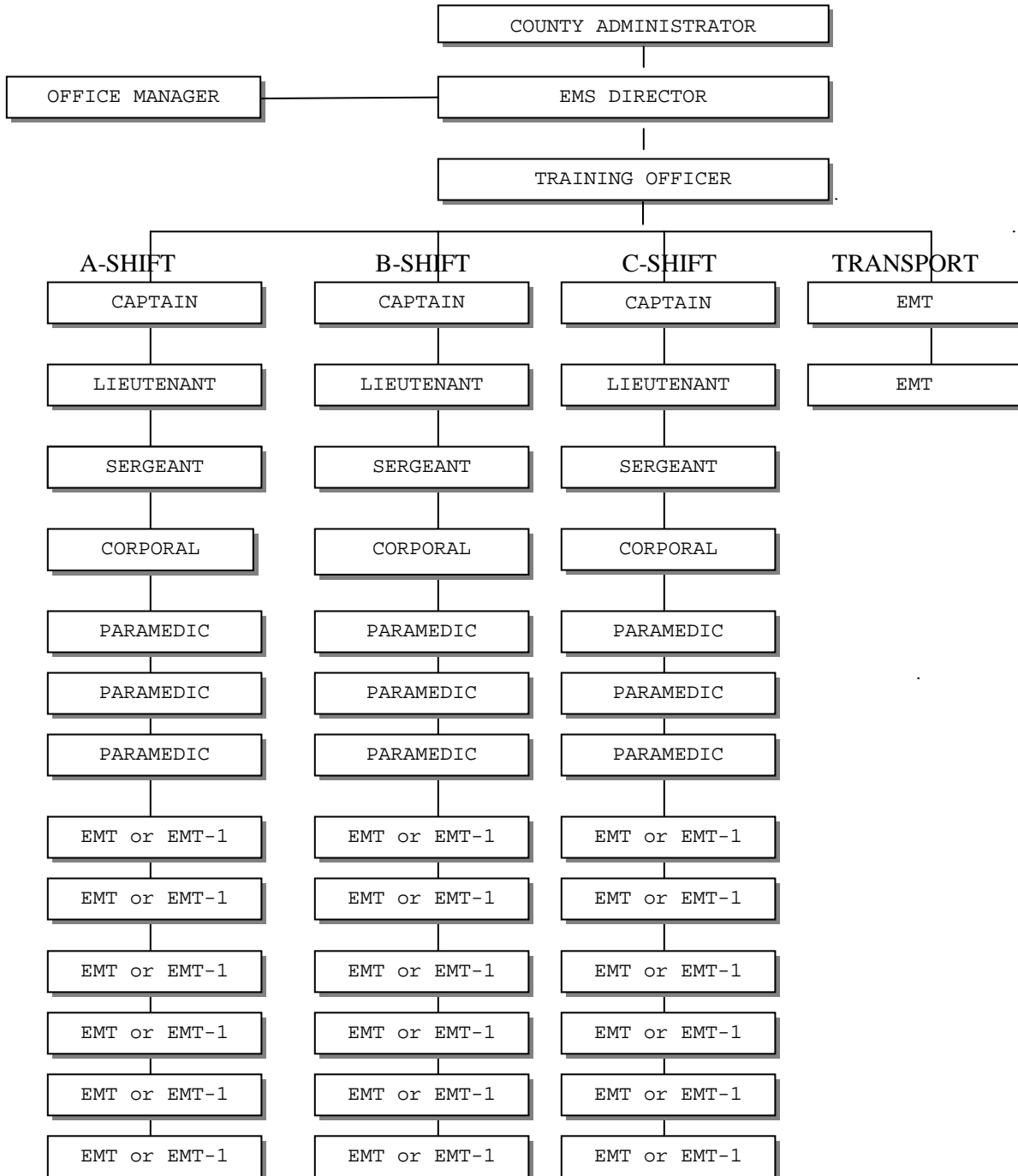


_____ **Direction**

----- **Coordination**

**APPENDIX 1 TO ANNEX I—AMBULANCE SERVICE—ORGANIZATIONAL CHART
(Internal)**

FAIRFIELD COUNTY



_____ **DIRECTION**

**APPENDIX 2 TO ANNEX I, EMERGENCY MEDICAL SERVICE (AMBULANCE)--
ALERT LIST**

FAIRFIELD COUNTY

TITLE/AGENCY

Director, Fairfield County EMS (*Ambulance*)

Training Officer EMS

EMS Shift Supervisor

*****ALL TELEPHONE NUMBERS ARE KEPT CURRENT IN OUR COUNTY ALERT LIST
SOP, DISTRIBUTED TO ALL APPROPRIATE AGENCIES.***

**APPENDIX 3 TO ANNEX I, EMERGENCY MEDICAL SERVICE (AMBULANCE)--
RESOURCES LIST**

FAIRFIELD COUNTY

UNIT

Fairfield County Emergency Medical Service (*Ambulance*)

TYPE OF EQUIPMENT

9--Ambulances

43--Full Time Personnel

20--Part Time Personnel

60--Walkie-talkies

100% Pager Alert Capability

TYPE PERSONNEL

a. EMT---20

b. EMT-I--3

c. Paramedics---20

d. Physician---1

e. Office Manager---1

**APPENDIX 4 TO ANNEX I, EMERGENCY MEDICAL SERVICE (AMBULANCE)--
COMMUNICATIONS NET**

FAIRFIELD COUNTY

NET

All EMS Units operate on a frequency of 453.5125 Transmitter
458.5126 Receiver
DPL-23
155.220 Backup

All Fairfield County EMS units are equipped with mobile units. EMS has a pager system to alert off-duty personnel.

**APPENDIX 5 TO ANNEX 8, EMERGENCY MEDICAL SERVICE (AMBULANCE)--
HOST AREA REQUIREMENTS STATEMENT**

FAIRFIELD COUNTY

LOCATION: Fairfield Memorial Hospital

1. **Equipment**

9 fully-equipped ambulances.

2. **Supplies**

Basic--Advanced ambulance supplies for 9 ambulances.

3. **Personnel**

43 EMT or Paramedics

20 Part Time EMT or Paramedics

1 Physician

1 Office Manager