

# ANNEX F TO FAIRFIELD COUNTY EMERGENCY OPERATIONS PLAN

## FIRE SERVICE

### I. AUTHORITIES AND REFERENCES

#### A. Purpose

To provide for the coordination and use of all fire fighting organizations, personnel and equipment in Fairfield County during a disaster situation.

#### B. Authority

1. Fairfield County Ordinance No. 487, signed May 9, 2005.
2. South Carolina Legislative Act Number 199, July 30, 1979.
3. S.C. Code of Laws, 1976, as amended, 16-11-1410 through 16-11-1450 (*Emergency Powers Act*).
4. Fairfield County Mitigation Plan

#### C. Definition

**FIRE SERVICE**—Composed of all fire fighting organizations, their personnel, facilities and resources at county level, including local and state agencies/departments, and non-government volunteer fire departments.

### II. SITUATION AND ASSUMPTIONS

#### A. Situation

1. Fairfield County is subject to disasters (natural, human accident/incident or terrorist act) that could result in a need for increased Fire Service operations that may affect the public health and result in a large number of deaths and/or injuries and damage. Fairfield County has the capability and adequate resources to meet routine Fire Service needs. However, a disaster causing serious property damage, injuries and death creates problems that are multiplied and complex. The responsibility of maintaining a radiological monitoring and decontamination capability falls within the functional area of the Fire Service. A disaster such as described could tax the capability and resources of the County Fire Service.

#### B. Assumptions

1. Existing fire personnel and equipment will be able to handle most emergencies through the use of existing memorandum of understanding and/or mutual aid agreements.
2. When additional support is required, assistance can be obtained from state and federal agencies.

### **III. MISSION**

To provide a well-organized and equipped fire fighting organization for fire suppression and, if required, provide radiological monitoring and decontamination and rescue operations during a disaster situation.

### **IV. CONCEPT OF OPERATIONS**

#### **A. General**

1. The fire service has the primary responsibility of protecting our community from the hazards of fires and also has responsibility for dealing with hazmat spills and radiological incidents.
2. The responsibilities of the fire service in emergency situations are basically the same as in daily operations. These responsibilities include fire control, hazmat and oil spill response, and radiological protection operations. During emergency situations, fire services may also be called on to undertake a number of other tasks that are not performed on regular basis. Such tasks may include assisting law enforcement personnel in route alerting or door-to-door warning for those who cannot be reached by primary warning systems.
3. All fire personnel will be trained on the principles of the National Incident Management System (NIMS) and integrate those principles into all fire planning and response operations.
4. All activities will be directed and coordinated from the Fairfield County Emergency Operations Center (EOC), when activated.
5. Mission assignments will be made by the Fairfield County Fire Service Director.
6. The Fire Chiefs of the Fairfield County Fire Departments have the responsibility to direct emergency fire fighting operations in their respective areas.
7. The Fairfield County Fire Service Director has overall responsibility for the coordination of fire fighting forces during emergencies and providing professional advice on fire fighting and the hazards associated with radioactive and hazardous materials.
8. State forces used in support of this Annex will be committed on a mission-type basis when requested and in accordance with the SC Emergency Operations Plan.
9. Utilization of the Incident Command System will be performed to coordinate with all appropriate departments/agencies and organizations to ensure operational readiness. A Unified Command will be used for multi-agency, multi-jurisdictional incidents. A fire liaison will be established in the EOC to coordinate communications from the Incident Command Post to the EOC.

10. The Fairfield County Fire Department does not have a Search and Rescue (USR) capability. If needed, Fairfield County will rely on mutual aid agreements with neighboring counties or contact the State Warning Point to request assistance from state USR teams.

## **B. Implementation**

The first Fire Department unit or officer to arrive on the scene will assume and retain Command until relieved by a ranking officer within the following guidelines:

1. The first arriving company officer will automatically assume Command except as noted below.
2. The first arriving Assistant Chief will automatically assume Command after transfer of Command procedures has been completed.
3. Assumption of Command is discretionary for the Fire Chief of each station.

Note: This does not preclude the option of the first arriving company officer having another company officer arriving with him or close behind take Command. This may be prearranged or may be necessitated by circumstances; in either case it shall be confirmed by both parties by radio.

## **C. Actions by Phases of Emergency Management**

The following actions are common to all fire departments during the three phases listed below:

### **1. Preparedness**

- a. Develop written procedures to implement this annex.
- b. Identify, train and equip assigned personnel to fire fighting, radiological monitoring/decontamination and chemical response teams.
- c. Develop and implement advanced training programs for fire fighting, radiological and chemical response personnel.
- d. Determine location of shelters to be used by assigned personnel.
- e. Maintain written agreements and establish working relationships with supporting agencies/departments.
- f. Ensure all fire personnel integrate NIMS principles in all planning. As a minimum, primary officers for each fire station will complete FEMA's NIMS Awareness Course, or an equivalent course.

## 2. **Response**

- a. Upon notification that a disaster/emergency is imminent or that a threat of a disaster/emergency exists, establish communications with the Emergency Operations Center (EOC).
- b. Initiate notification to all Fire Service personnel. Establish an “ON ALERT STATUS” and keep them informed of the situation.  
*See Appendix 2.*
- c. Notify Fairfield County EOC of operational readiness.
- d. Maintain communication and liaison with the EOC.
- e. Perform fire-fighting and any other assigned duties as needed to including responding to assigned emergency shelters.
- f. Perform chemical/radiological monitoring assignments as directed.
- g. If chemical/radioactive material presents a danger, contact the EOC.
- h. Prepare for decontamination operations if needed.
- i. Determine needs for disaster victims.
- j. Keep the EOC informed of all emergency actions and current situation.

## 3. **Recovery**

- a. Maintain liaison with the Fairfield County EOC.
- b. Continue to provide fire-fighting capabilities within affected area(s) until conditions return to normal.
- c. Assist in search and rescue duties as necessary and other areas when feasible.
- d. If radioactive material is involved, coordinate with the EOC and Radiological Protection Officer for decontamination activities.
- e. Maintain communications with the EOC.

## 4. **Mitigation**

- a. Enforce fire codes.
- b. Perform fire safety education programs and recommend fire prevention activities for the public.

## V. ORGANIZATION AND ASSIGNMENT OF RESPONSIBILITIES

### A. Organization

1. *See Organization Chart, Appendix 1.*
2. The Fairfield County Fire Service Director is designated as coordinator of the County Fire Service. He is responsible for coordinating the fire fighting activities of all fire departments when they are requested to support the concept of operations under this annex. Elements of the Fairfield County Fire Service consist of the following fire departments:

#### a. Local Government (*Municipalities/County*)

1. Winnsboro Department of Public Safety
2. Community Volunteer Fire Department
3. Ridgeway Volunteer Fire Department
4. Mitford Volunteer Fire Department
5. Greenbrier/Bethel Volunteer Fire Department
6. Lebanon Volunteer Fire Department
7. Blair Volunteer Fire Department
8. Southeastern Volunteer Fire Department
9. Jenkinsville/Monticello Volunteer Fire Department
10. Feasterville Volunteer Fire Department
11. Dutchman Creek Volunteer Fire Department
12. Blackstock/Woodward Volunteer Fire Department
13. Community Sub-Station
14. Greenbrier Sub-Station

#### b. State/Federal Government

1. South Carolina Department of Labor, Licensing and Regulation, State Fire Marshal
2. South Carolina Forestry Commission. *See Appendix 3.*

### B. Responsibilities

1. Coordinate all fire services activities.
2. Provide fire control and protection.
3. Provide support for shelter/mass care operations.
4. Assist in warning and operation of warning sirens.
5. Provide support for radiological protection.
6. Respond to Hazmat accident/incident.
7. Enforce fire codes.
8. Prepare and execute mutual aid agreements.

9. Provide support for other public safety operations as necessary.

## **VI. ADMINISTRATION AND LOGISTICS**

### **A. Administration**

Initial situation reports will be submitted to the Fairfield County Fire Service Director as soon as practicable. Reports will be consolidated and submitted to the Fairfield County Emergency Management Department for analysis and should contain but not be limited to the following:

1. Type of emergency, i.e.; fire, chemical, radiological, etc.
2. Describe the property damage in detail.
3. Actions taken.
4. Casualties (injuries/deaths) should be noted as to names, addresses and type of injury/death incurred.
5. Nature and extent of any assistance rendered.
6. Estimated cost of damage, when feasible.
7. Names of responders.

### **B. Logistics**

Individual fire departments will utilize supplies, equipment and transportation issued or supplied to their department. Additional supplies, fire fighting equipment, transportation and personnel will be requested through the Fairfield County EOC. *See Appendices 3 and 4.*

## **VII. DIRECTION AND CONTROL**

- A.** Fire fighting, chemical and radiological response activities will be coordinated with the Fairfield County EOC under the direction and control of the Fairfield County Fire Marshal.
- B.** The Fairfield County EOC will be located at one of the following sites and will be announced by the Fairfield County Emergency Management Department at the time of activation:
  1. **Primary**---is located at 100 Tidewater Dr, Winnsboro, SC.
  2. **Alternate**--Fairfield County Governmental Complex located at 350 Columbia Rd, Winnsboro, SC.
- C.** Fire fighting, chemical and radiological response operations will be directed over urban/rural radio communications nets and telephones. *See Appendix 5.*
- D. Line of Succession**
  1. Fairfield County Fire Service Director
  2. Chairman, Fairfield County Fire Board
  3. Local Jurisdiction Fire Chief

**E. Mutual Aid Agreements**

Agreements have been made between City, County, State and Fire Departments to assist in emergency operations.

**VIII. PLAN MAINTENANCE AND DEVELOPMENT**

**A. Development**

1. The Fire Service Director of Fairfield County will be responsible for the development and maintenance of this annex.

**B. Maintenance**

1. This annex will be reviewed annually.
2. This annex will be updated as necessary, based upon deficiencies identified by drills and exercises, changes in local government structure, or technological changes, etc.

---

Director, Fairfield County Fire Service

---

Date

---

Director, Fairfield County Emergency  
Management Department

---

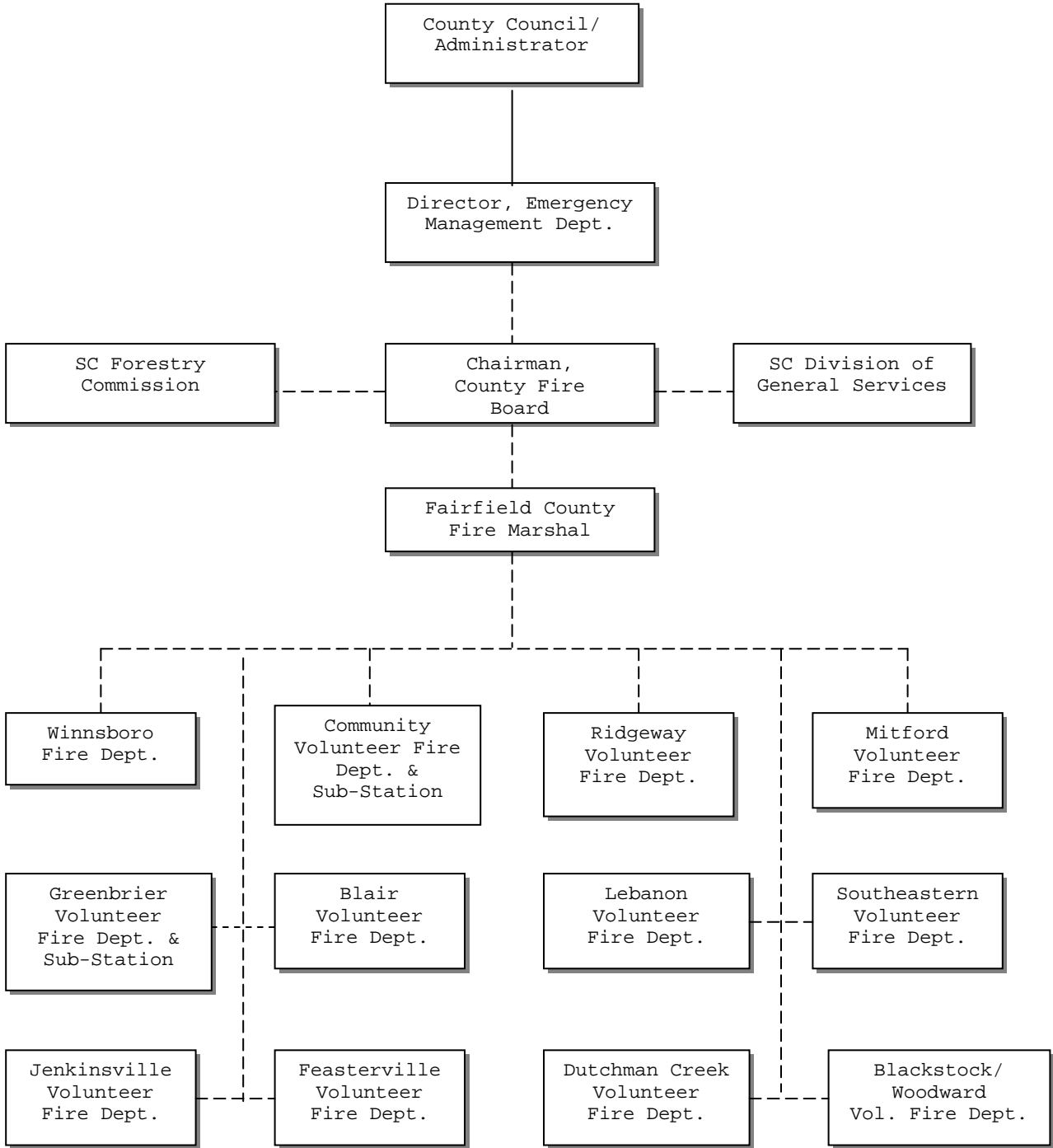
Date

**APPENDICES:**

1. **Organization Chart**
2. **Alert List**
3. **Resources List**
4. **Host Area Requirements Statement**
5. **Communications Net**

**APPENDIX 1 TO ANNEX F—ORGANIZATION CHART**

**FAIRFIELD COUNTY**



————— **Direction**

----- **Coordination**



**APPENDIX 2 TO ANNEX F--ALERT LIST, FIRE SERVICE, FAIRFIELD COUNTY  
EMERGENCY OPERATIONS PLAN**

**FAIRFIELD COUNTY**

**DEPARTMENT**

Chief, Municipal Fire Service

Chairman, Fairfield County Fire Board

Fairfield County Fire Service Director

Community Volunteer Fire Department and Sub-Station

Mitford Volunteer Fire Department

Greenbrier-Bethel Volunteer Fire Department and Sub-Station

Lebanon Volunteer Fire Department

Blair Volunteer Fire Department

Southeastern Volunteer Fire Department

Jenkinsville-Monticello Volunteer Fire Department

Dutchman Creek Volunteer Fire Department

Feasterville Volunteer Fire Department

Blackstock-Woodward Volunteer Fire Department

Ridgeway Volunteer Fire Department

SC Forestry Commission (*Assistance through County EOC to State EOC*)

SC Fire Service Coordinator (*Assistance through County EOC to State EOC*)

***\*\*ALL TELEPHONE NUMBERS ARE KEPT CURRENT IN OUR COUNTY ALERT LIST  
SOP, DISTRIBUTED TO APPROPRIATE AGENCIES.***

**APPENDIX 3 TO ANNEX F--RESOURCE LIST, FIRE SERVICE, FAIRFIELD COUNTY  
EMERGENCY OPERATIONS PLAN**

**FAIRFIELD COUNTY**

**FIRE SERVICE**

**A. Blair Volunteer Fire Department**

1. Vehicles with sirens--2
2. Vehicles with P.A. systems--2
3. Elevated sirens--0
4. Pumper trucks--1 -- 1,000 gal.
5. Tanker trucks--1 -- 2000 gal.
6. Personnel--4 volunteers
7. Other Resources--4 -- Walkie-talkies, 1 -- 3,500 watt generator

**B. Blackstock/Woodward Volunteer Fire Department**

1. Vehicles with sirens--3
2. Vehicles with P.A. systems--3
3. Elevated sirens--0
4. Pumper trucks--1 -- 1000 gal.
5. Tanker trucks--1 -- 1,500 gal.
6. Brush Truck-- 1
7. Personnel--9 volunteers
8. Other Resources--1 -- 3,500 watt generator

**C. Community Volunteer Fire Department**

1. Vehicles with sirens--5
2. Vehicles with P.A. systems--5
3. Elevated sirens--1 -- located at station
4. Pumper trucks--2: 2 -- 1,000 gal.
5. Tanker truck--1 -- 2,000 gal.
6. Equipment truck—1
7. Brush Truck—1
8. Personnel--24 volunteers
- 9 Other Resources--16 -- Walkie-talkies, 2 -- 3,500 watt generator

**Substation - 2 Vehicles with PA 1,500 gal. Pumper, 1,500 gal. Tanker 1 Elevated Platform Truck 103 ft.**

**D. Dutchman Creek Volunteer Fire Department**

1. Vehicles with sirens--4
2. Vehicles with P.A. systems--3
3. Elevated sirens--1 -- located at station
4. Pumper trucks--1-- 1,500 gal.
5. Equipment truck—1
6. Brush Truck -- 1
7. Personnel--13 volunteers
8. Other Resources--5 --Walkie-talkies, 3,500 watt generator

**Substation – 2 Vehicles with PA, 1- 2,000 gal. Tanker, 1- 2,500 Pumper**

**APPENDIX 3 TO ANNEX F--RESOURCE LIST, FIRE SERVICE, FAIRFIELD COUNTY  
EMERGENCY OPERATIONS PLAN (Continued)**

**FAIRFIELD COUNTY**

**FIRE SERVICE**

**E. Feasterville Volunteer Fire Department**

1. Vehicles with sirens--3
2. Vehicles with P.A. systems--3
3. Elevated sirens--0
4. Pumper trucks--1 -- 1,000 gal.
5. Tanker trucks--1 -- 2,000 gal.
6. Equipment Truck--1
7. Personnel--14 volunteers
8. Other Resources--4 -- Walkie-talkies and 1 -- 3,500 watt generator

**F. Greenbrier-Bethel Volunteer Fire Department**

1. Vehicles with sirens--4
  2. Vehicles with P.A. systems--4
  3. Elevated sirens--0
  4. Pumper trucks--1 -- 1,000 gal.
  5. Tanker trucks--1--2000 gal
  6. Equipment truck --1
  7. Brush Truck --1
  7. Personnel--16 volunteers
  8. Other Resources--4 --Walkie-talkies and 1 -- 3,500 watt generator
- Substation - 2 Vehicles with PA 1,000 gal. Pumper, 1,500 gal. Tanker**

**G. Lebanon Volunteer Fire Department**

1. Vehicles with sirens--4
2. Vehicles with P.A. systems--4
3. Elevated sirens--0
4. Pumper trucks--1 -- 1,500 gal.
5. Tanker trucks--1 -- 2,000 gal.
6. Equipment truck--1
7. Brush Truck --1
8. Personnel--20volunteers
9. Other Resources--2 -- Walkie-talkies and 1 -- 3,500 watt generator

**H. Mitford Volunteer Fire Department**

1. Vehicles with sirens--4
2. Vehicles with P.A. systems--3
3. Elevated sirens--1 located at station
4. Pumper trucks--1 -- 1,000 gal.
5. Tanker trucks- 1--2000 gal
6. Equipment truck—1
7. Brush Truck--1
8. Personnel—16 volunteers
9. Other Resources--1 -- 3,500 watt generator

**APPENDIX 3 TO ANNEX F--RESOURCE LIST, FIRE SERVICE, FAIRFIELD COUNTY  
EMERGENCY OPERATIONS PLAN (Continued)**

**FAIRFIELD COUNTY**

**FIRE SERVICE**

**I. Monticello-Jenkinsville Volunteer Fire Department**

1. Vehicles with sirens--4
2. Vehicles with P.A. systems--3
3. Elevated sirens--0
4. Pumper trucks--1 -- 1,000 gal.
5. Tanker trucks--1 -- 2,000 gal.
6. Equipment truck--1
7. Brush Truck -- 1
8. Personnel--7 volunteers
9. Other Resources --6 -- Walkie-talkies and 1 -- 3,500 watt generator

**J. Ridgeway Volunteer Fire Department**

1. Vehicles with sirens--4
2. Vehicles with P.A. systems--3
3. Elevated sirens--1 located at station
4. Pumper truck-- 2 -- 1,000 gal.
5. Tanker trucks--1 -- 2,000 gal.
6. Equipment truck--1
7. Personnel--9 volunteers
8. Other Resources--2 -- Walkie-talkies and 1 -- 3,500 watt generator

**K. Southeastern Volunteer Fire Department**

1. Vehicles with sirens--3
2. Vehicles with P.A. systems--3
3. Elevated sirens--0
4. Pumper trucks--2 -- 1,000 gal. 1--1,500 gal.
5. Equipment truck--1
6. Personnel--15 volunteers
7. Other Resources--1 -- 3,500 watt generator

**L. Town of Winnsboro Department of Public Safety**

1. Vehicles with sirens--3
2. Vehicles with P.A. systems--4
3. Elevated sirens--1 located at station
4. Pumper trucks-- 2 -- 1,000 gal.
5. Equipment truck—1
6. Ladder Truck 100 Ft.
7. Brush Truck -- 1
8. Personnel--19 paid and 16 volunteers
9. Other Resources--10 -- Walkie-talkies and 6 -- tower lights

**APPENDIX 4 TO ANNEX F, FIRE SERVICE--HOST AREA REQUIREMENTS  
STATEMENT**

**FAIRFIELD COUNTY**

**1. Personnel**

Additional personnel would depend upon severity of the situation.

**2. Equipment**

Depends upon severity of situation and decision would be made at that time.

**3. Supplies**

Depends upon severity of situation and decision would be made at that time.

**APPENDIX 5 TO ANNEX F, FIRE SERVICE--COMMUNICATIONS NET**

**FAIRFIELD COUNTY**

**FIRE NET**

**All Fairfield County Fire Departments**

Channel 1 Dispatch 158.955 MHz Tx 154.160 MHz Rx PL 173.8

Channel 2 153.890 MHz

**Forest Fire Service (State)**

Dispatch --159.420 PL 88.5

Channel 4 --151.460 PL 88.5

Channel 6 --151.400 PL 88.5

Airplane --159.300 PL 186.2