

ANNEX C TO THE FAIRFIELD COUNTY EMERGENCY OPERATIONS PLAN

WARNING SERVICE

I. AUTHORITIES AND REFERENCES

A. Purpose

To provide a system capable of receiving information relative to an impending or actual natural or technological disaster, or terrorist act and disseminating this information to designated county and municipal officials and to the residents of Fairfield County.

B. Authority

1. Fairfield County Ordinance Number 487, signed May 9, 2005.
2. South Carolina Legislative Act Number 199, July 30, 1979.
3. Fairfield County Mitigation Plan

C. Definition

WARNING SERVICE--A service provided by local governments to warn and alert county and municipal officials and to warn the public of actual or impending disasters.

II. SITUATION AND ASSUMPTIONS

A. Situation

1. Fairfield County is subject to disasters (*natural, technological, or terrorist act*) that could greatly affect the public health and result in a large number of deaths and/or injuries and damage. While Fairfield County has the capability and adequate resources to meet routine needs, during a disaster, problems are multiplied and made more complex. A disaster could tax the capability and resources of Fairfield County.
2. In every type of natural or technological disaster situation, the warning system would follow the same procedure. The initial warning enters the system from the county warning point and is disseminated over every means available to alert government officials, departments, agencies and residents of an impending disaster.

B. Assumptions

1. Timely warnings to the public of impending emergencies or those which have occurred may save lives, decrease injuries, and reduce some types of property damage.
2. Some people who are directly threatened by a hazard may ignore, not hear, or not understand warnings issued by the government.
3. Provisions must be made to provide warnings to special needs groups, such as the hearing and sight-impaired, and institutions, such as nursing homes and correctional facilities.

III. MISSION

To provide a well-structured organization capable of receiving, documenting, analyzing and disseminating warning information to the population and to alert key government officials in the shortest period of time.

IV. CONCEPT OF OPERATIONS

A. General

Warning information will be received at the County Warning Point by means of:

1. State Warning Point (*FAX OR TELEPHONE*).
2. State Alternate Warning Point (*FAX OR TELEPHONE*).
3. SLED.
4. NAWAS.
5. Other state government agencies having access to county government.
6. Local governmental agencies.
7. Non-governmental agencies having access to county government.
8. General Public.

B. Municipality

Each municipal agency having an assigned emergency management responsibility has a warning responsibility to alert the population of pending disasters by any means available, including house-to-house contact. Special attention will be given to develop a flood warning system for those areas subject to frequent flooding.

C. County Warning Point

The Fairfield County Public Safety Answering Point is the county primary point for receipt and dissemination of attack warning, natural disaster warning and other emergency information. The County Warning Points operate 24 hours daily.

D. Warning Devices

Fairfield County has fixed sirens mounted on 5 Volunteer Fire Departments within the county and V.C. Summer Nuclear Station has sirens mounted throughout a 10 mile radius of the plant.

The 5 stations which have sirens are listed below:

- a. Dutchman Creek Volunteer Fire Department
- b. Mitford Volunteer Fire Department
- c. Ridgeway Volunteer Fire Department
- d. Community Volunteer Fire Department
- e. Winnsboro Department of Public Safety

E. Dissemination of Attack Warning

1. In the event of an actual attack upon the United States the National Weather Service will disseminate the warning over the National, Oceanic and Atmospheric Administration FM Weather Radio System and EAS Message.

F. Route Alerting and Door-to-Door Warning

The public may be warned by route alerting using vehicles equipped with sirens and public address systems. Route alerting may not work well in some areas, including rural areas where residences are some distance from the road. Warnings may also be delivered by response personnel going door-to-door.

G. Dissemination of Warning to Special Population

Special populations and facilities will be warned of emergency situation by the following methods:

1. Visually impaired, hearing impaired and non-English speaking groups are notified by the most expedient means possible such as: EAS messages on radio, sirens, NOAA Weather Radio, route alerting, door-to-door notification.
2. Public schools, hospitals and other special warning locations are notified by emergency personnel at the County Warning Point as well as notification by EAS messages on radio/television, sirens, NOAA Weather Radio, route alerting, door-to-door notification.

F. Actions by Phases of Emergency Management

1. Preparedness

County Warning Officer: (*Emergency Management Director*)

- a. Develop procedures to notify warning service personnel to implementation of this plan.
- b. Brief assigned PSAP Telecommunicators of plan requirements.
- c. Identify, train and assign personnel to operate alerting and warning equipment.
- d. Determine critical and sensitive facilities and warning requirements to warn the facilities. Facilities include schools, hospitals, nursing homes, confinement facilities, industries and places of public assembly.
- e. Develop and maintain agreements and working relationships with government/non-government agencies.
- f. Assign areas of responsibility to emergency vehicles equipped with sirens and/or Public Address (P.A.) systems.

- g. Periodically test and review plans, procedures to insure warning service personnel are knowledgeable of their assigned responsibilities.
- h. Insure plan is periodically reviewed and updated annually or sooner when required.
- i. Maintain liaison with all departments/agencies having a warning capability.
- j. Maintain liaison with Emergency Management Agency.
- k. Coordinate crisis warning relocation operations with the Public Information Officer and Fairfield County Emergency Management.
- l. Ensure the county warning system provides for the special requirements of the institutionalized, the mobility impaired, the handicapped and the elderly.
- m. Ensure that a flood warning system is developed for those areas subject to frequent flooding.

2. **Response**

County Warning Officer: (*Emergency Management Director*):

- a. Alert Public Safety Answering Point (PSAP) Telecommunicators to begin notifying departments/agencies, key personnel and local warning points listed on the emergency notification list, located at telecommunicator work stations. Provide all information available. (*See Appendix 2*).
- b. Alert warning service personnel to report to duty.
- c. Dispatch representative to the Emergency Operations Center (EOC) to act as liaison for Warning Service.
- d. Maintain liaison with all departments/agencies having warning capability.
- e. Maintain liaison with Public Information Officer (*PIO*).
- f. Maintain liaison with County Emergency Management Agency.

3. **Recovery**

County Warning Officer continues to provide Warning Service as required until situation returns to normal.

4. **Mitigation**

- a. Establish an effective public warning system and appropriate operating procedures. Extend the system to keep up with growth. Adopt new methods of warning that increase the ability to reach citizens not well served by current systems.
- b. Conduct public education designed to prevent citizens from taking unnecessary risks during emergency situations. An example would be a

public information effort discouraging people from driving on flooded roads.

V. ORGANIZATION AND ASSIGNMENT OF RESPONSIBILITIES

A. Organization

1. The Fairfield County Warning Service is a part of the Fairfield County Emergency Management Department, designated as Coordinator, Warning Service. The County Warning Point is located in the Fairfield County PSAP, located at 350 Columbia Road, Winnsboro, SC.
2. Local Warning Points are located at the Town of Winnsboro Department of Public Safety on Washington Street; and also at five of the Volunteer Fire Departments located throughout Fairfield County.
3. *See Organization Chart (Appendix 1).*

B. Responsibilities

1. Develop procedures to notify warning service personnel to implementation of his plan.
2. Brief assigned PSAP Telecommunicators of plan requirements.
3. Identify, train and assign personnel to operate alerting and warning equipment.
4. Determine critical and sensitive facilities and warning requirements to warn the facilities. Facilities include schools, hospitals, nursing homes, confinement facilities, industries and places of public assembly.
5. Develop and maintain agreements and working relationships with government/non-government agencies.
6. Assign areas of responsibility to emergency vehicles equipped with sirens and/or Public Address (P.A.) systems.
7. Periodically test and review plans, procedures to insure warning service personnel are knowledgeable of their assigned responsibilities.
8. Insure plan is periodically reviewed and up-dated annually or sooner when required.
9. Maintain liaison with all departments/agencies having a warning capability.
10. Maintain liaison with Emergency Management Agency.
11. Coordinate crisis warning relocation operations with the Public Information Officer and Fairfield County Emergency Management.
12. Ensure the county warning system provides for the special requirements of the institutionalized, the mobility impaired, the handicapped and the elderly.

13. Ensure that a flood warning system is developed for those areas subject to frequent flooding.

VI. ADMINISTRATION AND LOGICS

A. Administration

Submit a narrative report to Director, Fairfield County Emergency Management Department covering the following:

1. Time warning notice received (*list each notice separately*).
2. Name of person receiving warning.
3. How received: (*SLED teletype, telephone, NAWAS, etc.*).
4. Time each local warning point, department, and key individual was notified.
5. Time warning was complete.
6. Any difficulties encountered.

B. Logistics

County agencies/departments and private organizations will utilize supplies, operational aids and transportation organic to their specific organizations. Additional supplies, transportation, and manpower required will be requested through the County Emergency Operations Center (EOC).

VII. Direction and Control

A. Direction

1. Warning activities will be coordinated from the County Emergency Operations Center (*EOC*) when activated or the County Public Safety Answering Point.
2. The Fairfield County EOC will be located at one of the following sites and will be announced by the Fairfield County Emergency Management Department at the time of activation:
 - a. **Primary**—is located at 100 Tidewater Dr, Winnsboro, SC 29180.
 - b. **Alternate**—Fairfield County Governmental Complex located at 350 Columbia Rd, Winnsboro, SC 29180.

B. Line of Succession

1. Fairfield County Emergency Management Director

2. Fairfield County Emergency Management Deputy Director
3. Fairfield County Telecommunications Supervisor

VIII. PLAN DEVELOPMENT AND MAINTENANCE

A. Development

1. The Director of Emergency Management will be responsible for the development and maintenance of this annex.
2. The County siren system will be tested and maintained on a monthly basis.
3. The County notification list will be updated as required annually.

B. Maintenance

1. This annex will be reviewed annually.
2. This annex will be updated, as necessary based upon deficiencies identified by drills and exercises, changes in local government structure, or technological changes, etc.

Director, Fairfield County Emergency
Management Department

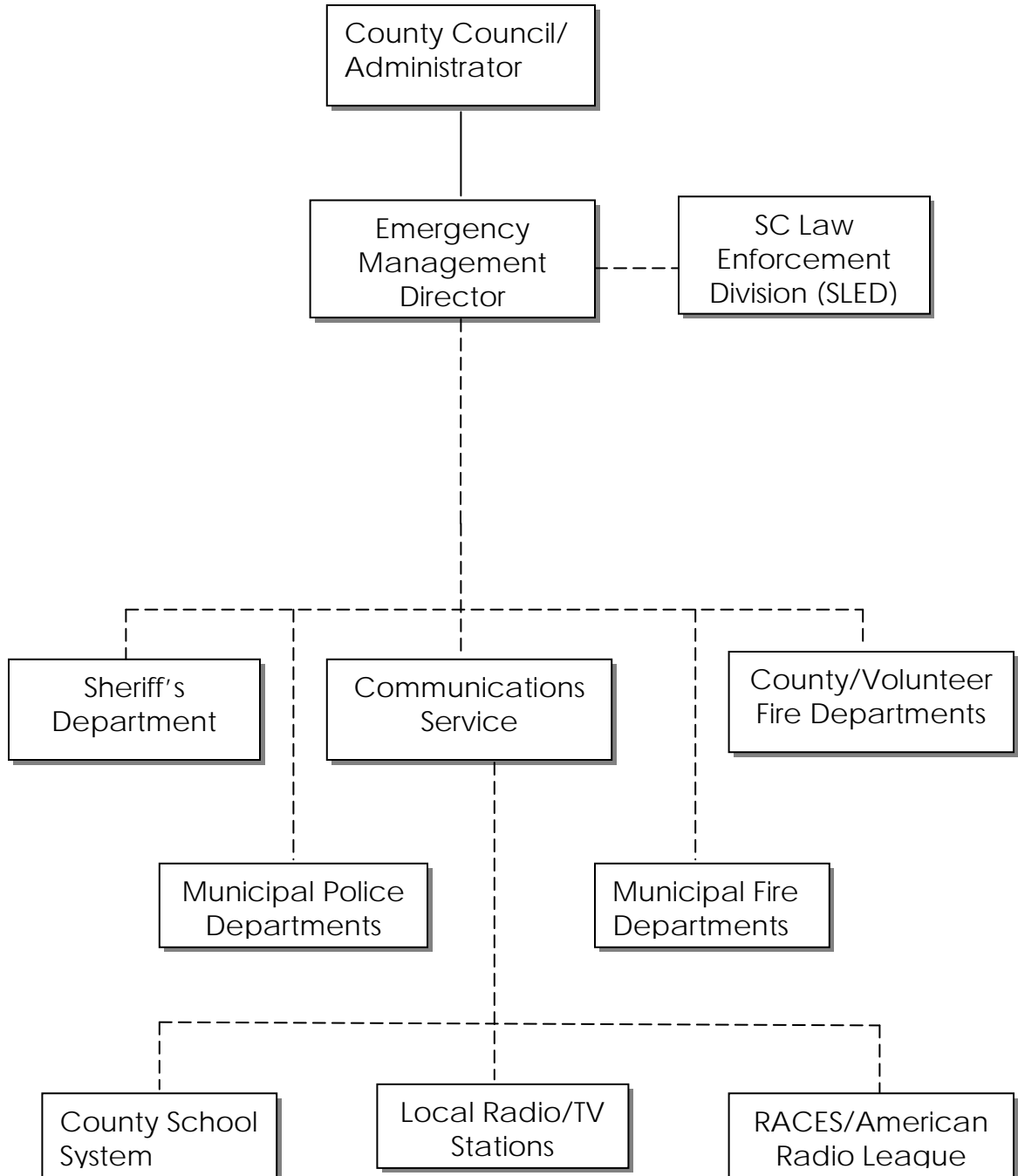
Date

APPENDICES;

- 1. Organization Chart**
- 2. Emergency Notification List**
- 3. Warning Point Standard Operating Procedures**

APPENDIX 1 TO ANNEX C, WARNING—ORGANIZATION CHART, FAIRFIELD COUNTY EMERGENCY OPERATIONS PLAN

FAIRFIELD COUNTY



_____ Direction

----- Coordination

**APPENDIX 2 TO ANNEX C--EMERGENCY NOTIFICATION LIST, FAIRFIELD
COUNTY EMERGENCY OPERATIONS PLAN**

EMERGENCY NOTIFICATION LIST

Upon receiving a warning requiring the activation of the County Warning Service, the PSAP will notify the following personnel, departments and agencies:

ALL WARNING WILL BE HANDLED BY OUR COUNTY STANDARD OPERATING PROCEDURES WITH THE TITLE OF "ALERT LIST NOTIFICATION" WHICH IS UPDATED ANNUALLY OR AS NEEDED.

APPENDIX 3 TO ANNEX C--WARNING POINT STANDARD OPERATING PROCEDURES, WARNING SERVICE TO FAIRFIELD COUNTY EMERGENCY OPERATIONS PLAN

Upon receipt that a disaster is imminent or has occurred, the telecommunicator (*or responsible person assigned*) will implement the following procedures. The telecommunicators will turn to the appropriate TAB and take the necessary actions.

TAB:

- A. Aircraft Accident
- B. Dams and Reservoirs Emergency
- C. Earthquake
- D. Fire
- E. Flood
- F. Hazardous Materials Accidents, Transportation and Facilities
- G. Hurricane
- H. Terrorism
- I. Riot
- J. Search and Rescue
- K. Sonic Boom
- L. Tornado
- M. Unexploded Ordinance or Explosive Devices
- N. Water Supply Emergency
- O. Winter Storm

TAB A TO APPENDIX 3 TO ANNEX C--AIRCRAFT ACCIDENTS

1. Determine insofar as possible all specifics of the disaster/emergency incident:
 - a. Location of accident or incident.
 - b. Type of aircraft and whether military or civilian.
 - c. Time of accident or incident.
 - d. Potential danger.
 - e. Responsible party(s):
 - Names
 - Telephone Numbers
 - Location
 - f. Action already taken and anticipated.
 - g. Weather conditions at scene.
 - h. Any loss of lives and/or property damage.
2. **Actions**--Notify Affected Emergency Responders:
 - a. Fire department(s) in the vicinity of the incident and request support.
 - b. Sheriff/police/highway patrol in the area and, if necessary, dispatch additional forces. Instruct them to cordon the area causing all vehicular/pedestrian traffic to detour from the affected area.
 - c. If necessary, call ambulance or rescue squad nearest to affected and advise unit of all information including incident command post location, etc.
 - d. The Fairfield County Emergency Management Director providing the information you have received and emergency responders notified.
 - e. Notify the following offices--repeating the information as you have received it and the action taken to this point:
 - *Military installation nearest to accident (*if military*) or Federal Aviation Agency (*if civilian*).
 - *Sheriff (*if not notified earlier*).
 - *Director, Emergency Management (*if not notified earlier*).
 - *S.C. Department of Health and Environmental Control (*if appropriate*).
 - *S.C. Department of Natural Resources (*District Office, if appropriate*).
3. Carry out all instructions given to you by the persons listed above.

TAB B TO APPENDIX 3 TO ANNEX C--DAMS AND RESERVOIRS EMERGENCY

1. Determine insofar as possible all specifics of the disaster/emergency incident:
 - a. Location of accident or incident.
 - b. Name of facility.
 - c. Time of accident or incident.
 - d. Potential danger.
 - e. Responsible party(s):
 - Names
 - Telephone Numbers
 - Location
 - f. Action already taken and anticipated.
 - g. Weather conditions at scene.
 - h. Any loss of lives and/or property damage.
2. **Actions**--Notify Affected Emergency Responders:
 - a. Fire department(s) in vicinity of the incident and request support.
 - b. Sheriff/police/highway patrol in the area and, if necessary, dispatch additional forces. Instruct them to cordon the area causing all vehicular/pedestrian traffic to detour from the affect area.
 - c. If necessary, call ambulance or rescue squad nearest to affected area and advise unit of all available information including incident command post location, etc.
 - d. The Fairfield County Emergency Management Director providing information you have received and emergency responders notified.
 - e. Notify the following offices repeating the information as you have received and action taken to this point:
 - *National Weather Service--(*Columbia, Greer, Augusta GA and Wilmington NC*).
 - *S.C. Department of Health and Environmental Control (*if appropriate*).
 - *S.C. Department of Natural Resources, (*District Office if appropriate*).
3. Carry out all instructions given to you by the persons listed above.

TAB C TO APPENDIX 3 TO ANNEX C--EARTHQUAKE

1. Determine insofar as possible all specifics of the disaster/emergency incident:
 - a. Location of accident or incident.
 - b. Time of accident or incident.
 - c. Potential danger if there is a threat.
 - d. Action already taken and anticipated.
 - e. Weather conditions at scene.
 - f. Any loss of lives and/or property damage.
2. **Actions**--Notify Affected Emergency Responders:
 - a. Fire department(s) in the vicinity of the incident and request support.
 - b. Sheriff/police/highway patrol in the area and, if necessary, dispatch additional forces. Instruct them to cordon the area causing all vehicular/pedestrian traffic to detour from the affected area.
 - c. If necessary, call ambulance or rescue squad nearest to affected area and advise unit of all available information including incident command post location, etc.
 - d. The Fairfield County Emergency Management Director providing information you have received and emergency responders notified.
 - e. Notify the following officers repeating the information as you have received and action taken to this point:
 - *County Fire Service Director.
 - *Sheriff (*if not notified earlier*).
 - *S.C. Department of Health and Environmental Control (*if appropriate*).
 - *S.C. Department of Social Services (*if appropriate*).
3. Carry out all instructions given to you by the persons listed above.

TAB D TO APPENDIX 3 TO ANNEX C--FIRE

1. Determine insofar as possible all specifics of the disaster/emergency incident:
 - a. Location of accident or incident.
 - b. Type of fire.
 - c. Time of accident or incident.
 - d. Potential danger.
 - e. Responsible party(s):
 - Names
 - Telephone Numbers
 - Location
 - f. Action already taken and anticipated.
 - g. Weather conditions at scene.
 - h. Any loss of lives and/or property damage.
2. **Actions**--Notify affected Emergency Responders:
 - a. Fire department(s) in the vicinity of the incident and request support.
 - b. Sheriff/police/highway patrol in the area and, if necessary, dispatch additional forces. Instruct them to cordon the area causing all vehicular/pedestrian traffic to detour from the affected area.
 - c. If necessary, call ambulance or rescue squad nearest to affected area and advise unit of all available information including incident command post location, etc.
 - d. The Fairfield County Emergency Management Director providing information you have received and emergency responders notified.
 - e. Notify the following officers repeating the information as you have received it and action taken to this point:
 - *County Fire Service Director.
 - *Sheriff (*if not notified earlier*).
 - *S.C. Department of Health and Environmental Control (*if appropriate*).
 - *S.C. Department of Natural Resources, (*District Office, if appropriate*).
3. Carry out all instructions given to you by the persons listed above.

TAB E TO APPENDIX 3 TO ANNEX C--FLOOD

1. Determine insofar as possible all specifics of the disaster/emergency incident:
 - a. Location of accident or incident.
 - b. Height of water.
 - c. Time of accident or incident.
 - d. Potential danger.
 - e. Responsible party(s):
 - Names
 - Telephone Numbers
 - Location
 - f. Action already taken and anticipated.
 - g. Weather conditions at scene.
 - h. Any loss of lives and/or property damage.
2. **Actions**--Notify Affected Emergency Responders:
 - a. Fire department(s) in the vicinity of the incident and request support.
 - b. Sheriff/police/highway patrol in the area and, if necessary, dispatch additional forces. Instruct them to cordon the area causing all vehicular/pedestrian traffic to detour from the affected area.
 - c. If necessary, call ambulance or rescue squad nearest to affected area and advise unit of all available information including incident command post location, etc.
 - d. The Fairfield County Emergency Management Director providing information you have received and emergency responders notified.
 - e. Notify the following officers repeating the information as you have received it and action taken to this point:
 - *County Fire Service Director.
 - *Sheriff (*if not notified earlier*).
 - *S.C. Department of Health and Environmental Control (*if appropriate*).
 - *S.C. Department of Social Services (*if appropriate*).
3. Carry out all instructions given to you by the persons listed above.

**TAB F TO APPENDIX 3 TO ANNEX C--HAZARDOUS MATERIALS ACCIDENTS,
TRANSPORTATION AND FACILITIES**

1. Determine insofar as possible all specifics of the disaster/emergency incident:
 - a. Location of accident or incident.
 - b. Name of facility or transporter.
 - c. Mode of transportation (*Rail, Truck, or Air*).
 - d. Placard I.D. number.
 - e. Time of accident or incident.
 - f. Amount and type of material involved.
 - g. Potential danger or hazardous material involved.
 - h. Anticipated transfer of hazardous materials or clean-up operations.
 - i. Responsible party(s):
 - Names
 - Telephone Numbers
 - Location
 - j. Action already taken and anticipated.
 - k. Weather conditions at scene.
 - l. Any loss of lives and/or property damage.

2. **Actions**--Notify Affected Emergency Responders:
 - a. Fire department(s) in the vicinity of the incident and request support.
 - b. Sheriff/police/highway patrol in the area and, if necessary, dispatch additional forces. Instruct them to cordon the area causing all vehicular/pedestrian traffic to detour from the affected area.
 - c. If necessary, call ambulance or rescue squad nearest to affected area and advise unit of all available information including incident command post location, etc.
 - d. The Fairfield County Emergency Management Director providing information you have received and emergency responders notified.
 - e. Notify the following officers repeating the information as you have received it and action taken to this point:
 - *County Fire Service Director.
 - *Sheriff (*if not notified earlier*).
 - *S.C. Department of Health and Environmental Control (*if appropriate*).
 - *S.C. Department of Social Services (*if appropriate*).

3. Carry out all instructions given to you by the persons listed above.

TAB G TO APPENDIX 3 TO ANNEX C--HURRICANE

1. National Weather Service is responsible for issuing hurricane advisories.
2. Monitor all advisories for storm location; the forward speed and direction and the wind intensity.
3. Upon receipt of an advisory that a hurricane watch or warning is in effect, notify:
 - a. Fairfield County Emergency Management Director.
 - b. Fairfield County Sheriff.
 - c. Patrolling vehicles to monitor radio for weather information and report threatening weather conditions to the County Public Safety Answering Point (PSAP) for relay to National Weather Service and Emergency Management Director.
 - d. Maintain listening watch on commercial radio or NOAA Weather Radio.
4. Carry out all instructions given to you by the persons listed above.

TAB H TO APPENDIX 3 TO ANNEX C--TERRORIST WARNING

1. A Terrorist Warning (*armed attack against the United States*) message may be received via any number of ways, i.e., **NAMAS, SLED TELETYPE, TELEPHONE, NOAA WEATHER RADIO OR COMMERCIAL BROADCAST (EAS)**.
2. Upon receipt of a Terrorist warning message, immediately notify the following:
 - a. County Warning Officer: (Emergency Management Director)
 - b. Fairfield County Emergency Management Director.
 - c. Other designated county officials.
 - d. Carry out pre-written Terrorist warning instructions and orders of the above persons.

*(Example of Terrorist warning message text is as follows: **This is (name of warning center). This is a Terrorist Warning. Declaration time _____ Zulu.**)*

*(Be prepared to acknowledge receipt of the Terrorist Warning message as follows: **This is (warning point or EOC or Sheriff's Department). Terrorist Warning received.**)*

TAB I TO APPENDIX 3 TO ANNEX C--RIOT

1. Determine insofar as possible all specifics of the disaster/emergency incident:
 - a. Location of accident or incident.
 - b. Size of mob.
 - c. Time of accident or incident.
 - d. Potential danger.
 - e. Responsible party(s):
 - Names
 - Telephone Numbers
 - Location
 - f. Action already taken and anticipated.
 - g. Weather conditions at scene.
 - h. Any loss of lives and/or property damage.
2. **Actions**--Notify Affected Emergency Responders:
 - a. Fire department(s) in the vicinity of the incident and request support.
 - b. Sheriff/police/highway patrol in the area and, if necessary, dispatch additional forces. Instruct them to cordon the area causing all vehicular/pedestrian traffic to detour from the affected area.
 - c. If necessary, call ambulance or rescue squad nearest to affected area and advise unit of all available information including incident command post location, etc.
 - d. The Fairfield County Emergency Management Director providing information you have received and emergency responders notified.
 - e. Notify the following officers repeating the information as you have received it and action taken to this point:
 - *Sheriff (*if not notified earlier*).
 - *S.C. Department of Health and Environmental Control (*if appropriate*).
 - *S.C. Department of Social Services (*if appropriate*).
3. Carry out all instructions given to you by the persons listed above.

TAB J TO APPENDIX 3 TO ANNEX C--SEARCH AND RESCUE

1. Determine insofar as possible all specifics of the disaster/emergency incident:
 - a. Location of accident or incident.
 - b. Number of persons involved.
 - c. Time of accident or incident.
 - d. Potential danger
 - e. Responsible party(s):
 - Names
 - Telephone Numbers
 - Location
 - f. Action already taken and anticipated.
 - g. Weather conditions at scene.
2. **Actions**--Notify Affected Emergency Responders:
 - a. Fire department(s) in the vicinity of the incident and request support.
 - b. Sheriff/police/highway patrol in the area and, if necessary, dispatch additional forces. Instruct them to cordon the area causing all vehicular/pedestrian traffic to detour from the affected area.
 - c. If necessary, call ambulance or rescue squad nearest to affected area and advise unit of all available information including incident command post location, etc.
 - d. The Fairfield County Emergency Management Director providing information you have received and emergency responders notified.
 - e. Notify the following officers repeating the information as you have received it and action taken to this point:
 - *Chief, Fairfield County Rescue Squad.
 - *Sheriff (*if not notified earlier*).
 - *S.C. Department of Health and Environmental Control (*if appropriate*).
 - *S.C. Department of Natural Resources (*if appropriate*).
3. Carry out all instructions given to you by the persons listed above.

TAB K TO APPENDIX 3 TO ANNEX C--SONIC BOOM

1. Determine insofar as possible all specifics of the disaster/emergency incident:
 - a. Location of accident or incident.
 - b. Time of accident or incident.
 - c. Potential danger.
 - d. Responsible party(s):
 - Names
 - Telephone Numbers
 - Location
 - e. Action already taken and anticipated.
 - f. Weather conditions at scene.
 - g. Any loss of lives and/or property damage.
2. **Actions**--Notify Affected Emergency Responders:
 - a. Shaw Air Force Base
Chief, Public Affairs
803-668-8110
Extension--2925, 3621, 3492, or 3816
 - b. Fire department(s) in the vicinity of the incident.
 - c. Sheriff/police/highway patrol in the area.
 - d. The Fairfield County Emergency Management Director providing information you have received and emergency responders notified.
 - e. Notify the following officers repeating the information as you have received it and action taken to this point.
 - *Sheriff (*if not notified earlier*).
3. Carry out all instructions given to you by the persons listed above.

TABL TO APPENDIX 3 TO ANNEX C--TORNADO

1. Tornado WATCH

Upon receipt of notification that there is a Tornado WATCH, do the following:

- a. Notify the Fairfield County Emergency Management Director.
- b. Notify patrolling vehicles to monitor radio for weather information and report threatening weather conditions to PSAP for relay to National Weather Service.
- c. Maintain listening watch on commercial radio or NOAA Weather Radio.

2. Tornado WARNING

Upon receipt of notification that there is a Tornado WARNING:

- a. Notify the Fairfield County Emergency Management Director (*in his/her absence, notify personnel on alert notification list*).

3. Tornado TOUCHDOWN

Upon receipt of notification that there is a Tornado TOUCHDOWN:

- a. Notify Fairfield County Emergency Management Director (*in his/her absence, notify personnel on alert notification list*).
- b. Determine insofar as possible:
 - (1) Location.
 - (2) Severity of effects.
 - (3) Time of accident/incident.
 - (4) Casualties, if any.
 - (5) Action already taken.

4. Actions--Notify Affected Emergency Responders:

- a. Fire Department(s) in the vicinity of the incident and request support.
- b. Sheriff/police/highway patrol in the area and, if necessary, dispatch additional forces. Instruct them to cordon the area causing all vehicular/pedestrian traffic to detour from the affected area.
- c. If necessary, call ambulance or rescue squad nearest to affected area and advise unit of all available information including incident command post location, etc.
- d. Notify the following offices repeating the information as you have received and action taken to this point:
 - *Sheriff (*if not notified earlier*).
 - *S.C. Department of Social Services (*if appropriate*).

5. Carry out all instructions given to you by the persons listed above.

TAB M TO APPENDIX 3 TO ANNEX C--UNEXPLODED ORDNANCE OR EXPLOSIVE DEVICES

1. Determine insofar as possible all specifics of the disaster/emergency incident:
 - a. Location of incident.
 - b. Type of explosive.
 - c. Time of incident.
 - d. Potential danger.
 - e. Responsible party(s):
 - Names
 - Telephone Numbers
 - Location
 - f. Action already taken and anticipated.
 - g. Weather conditions at scene.
 - h. Any loss of lives and/or property damage.

2. **Actions**--Notify Affected Emergency Responders:
 - a. Fire department(s) in the vicinity of the incident and request support.
 - b. Sheriff/police/highway patrol in the area and, if necessary, dispatch additional forces. Instruct them to cordon the area causing all vehicular/pedestrian traffic to detour from the affected area.
 - c. If necessary, call ambulance or rescue squad nearest to affected area and advise unit of all available information including incident command post location, etc.
 - d. The Fairfield County Emergency Management Director providing information you have received and emergency responders notified.
 - e. Notify the following officers, repeating the information as you have received and action taken to this point:
 - *Fairfield County Fire Service Director.
 - *Sheriff (*if not notified earlier*).

3.
 - a. If the explosive is of a **non-military** nature notify: SLED Arson/Explosive Division (24-Hrs) 896-7000.
 - b. If the explosives are **military** in nature, call the Detachment at Fort Jackson: (24-Hrs) 803-751-5126/6919/1589/3113.

4. Carry out all instructions given to you by the persons listed above.

TAB N TO APPENDIX 3 TO ANNEX C--WATER SUPPLY EMERGENCY

1. Determine insofar as possible all specifics of the disaster/emergency incident:
 - a. Location of accident or incident.
 - b. Type of emergency (*contamination, filter plant breakdown, water shortage, etc.*).
 - c. Time of accident or incident.
 - d. Potential danger.
 - e. Responsible party(s):
 - Name
 - Telephone Numbers
 - Location
 - f. Action already taken and anticipated actions to cope with water shortages.
 - g. Scope of emergency to include the anticipated length of emergency.
 - h. Requirements for emergency water transportation.
2. **Actions**--Notify Affected Emergency Responders:

The Fairfield County Emergency Management Director, providing information you have received.
3. If a community needs potable water, coordinate with County Procurement Officer to contact the state procurement office for assistance in contracting commercial sources.
4. Carry out all instructions given to you by the person listed above.

TAB O TO APPENDIX 3 TO ANNEX C--WINTER STORMS

1. Determine insofar as possible all specifics of the disaster/emergency incident:
 - a. Area(s) threatened.
 - b. Action already taken and anticipated.
 - c. Severity of storm.
 - d. Any loss of lives and/or property damage.
2. Actions--Notify Affected Emergency Responders:
 - a. Fire department(s) in the vicinity of the incident and request support.
 - b. Sheriff/police/highway patrol in the area and, if necessary, dispatch additional forces. Instruct them to cordon the area causing all vehicular/pedestrian traffic to detour from the affected area.
 - c. If necessary, call ambulance or rescue squad nearest affected area and advise unit of all available information including incident command post location, etc.
 - d. The Fairfield County Emergency Management Director, providing information you have received and emergency responders notified.
 - e. Notify the following officers, repeating the information as you have received it and action taken to this point:
 - *Sheriff (*if not notified earlier*).
 - *S.C. Department of Transportation to obtain road conditions.
 - *S.C. Department of Social Services (*if appropriate*).
3. Monitor Tone Alert Radio and report changes to the above individuals.
4. Carry out all instructions given to you by the persons listed above.